



**C.H.
HANSON**[®]
Since 1866 • Tools for Generations™

2013 CATALOG

AUTOMATIC
7X FASTER
2X STRONGER
100% EASIER



PLIERS & CLAMPS



PLIERS



LAYOUT



COMMERCIAL STENCILS



CHALK, REELS & ACCESSORIES



KNIVES & BLADES



STENCILS



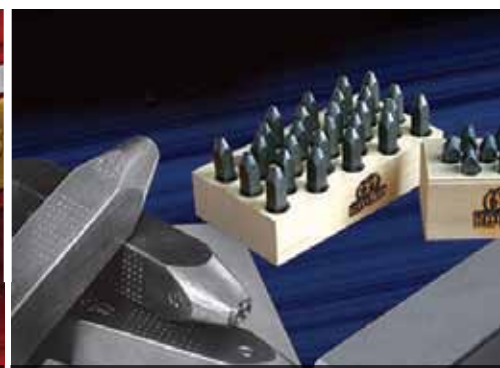
MARKING



TAPES & FLAGS



TAGS



STAMPS

2013 CATALOG

AUTOMATIC™

TOOLS

ONE-HANDED PLIERS, WRENCHES, AND CLAMPS

7x
FASTER

2x
STRONGER

100%
EASIER



Grab any size without adjusting
Automatic Groove Pliers



Lock on any size without adjusting
Automatic Locking Pliers & Clamps

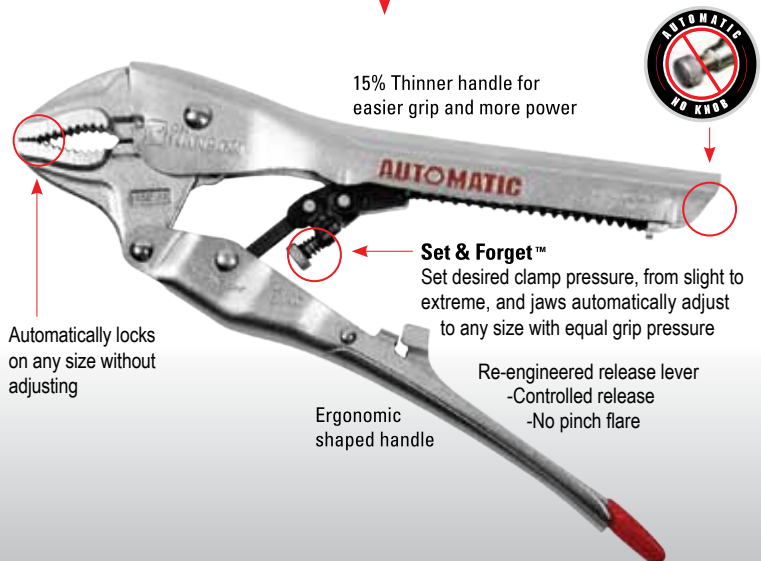


TABLE OF CONTENTS

Automatic Pliers & Clamps Pages 2-6



Locking Pliers, Clamps,
Groove Pliers, Sets

Manual Pliers & Clamps Pages 7-8



Manual Pliers, Clamps

Layout Pages 9-11



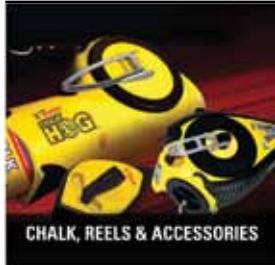
Framing Squares, Level,
Plumb Bobs, Stud Finder,
Measuring Wheels

Knives and Blades Pages 12-13



Auto Load, Double-End, Fixed
Blade, Retractable Blade, Snap Off
Blade, Replacement Blades

Chalk, Reels & Accessories Pages 14-16



Chalk Reels, Bottled Marking
Chalk, Replacement Chalk Lines,
Masonry Line Reels

Marking Pages 17-21



Retractable Pencil Pulls,
Pencils and Sharpeners,
Lumber Crayons, Markers

Tapes, Flags & Safety Pages 22-28



Barricade, Flagging, Underground,
Stake Flags, Safety Items

Shims Page 29

Stamps Pages 30-37



Standard, Heavy Duty, Premier,
Reversed, Round Face, Dot
Design Low Stress, Rhino,
Do Not Duplicate, Types and
Holders

Interlocking Stencils Pages 38-42



Interlocking Brass Stencil Sets,
Plastic, Brass Figure Wheels,
Fountain Brushes, Rollers and
Inks

Commercial Stencils Pages 43-58



1/8" Heavy duty, 1/16" Light duty,
Economy - Traffic & Safety

Tags Pages 59-72



Blank Metal, Anodized, Pre-Marked
and Numbered Brass Valve, Cable,
Seals, Sealing Presses

Custom Products Page 73

Stamps, Tags, Stencils, Tape

AUTOMATIC PLIERS & CLAMPS

Pliers and Clamps



- Automatically locks on any size without adjusting
- Grab thick grab thin
- No slip texture grip
- 7x faster and 100% easier than traditional locking pliers
- Easy squeeze release lever
- Limited lifetime warranty



Model#	Description	Jaw Opening	Throat Depth	Jaw Width	Pkg.
06100	6" Automatic Curved Jaw	1"	3/8"	3/8"	Carded

Model#	Description	Jaw Opening	Throat Depth	Jaw Width	Pkg.
06105	6" Automatic Curved Jaw Soft Grip	1"	3/8"	3/8"	Carded

Model#	Description	Jaw Opening	Throat Depth	Jaw Width	Pkg.
10100	10" Automatic Curved Jaw	2"	1 1/4"	1/2"	Carded

Model#	Description	Jaw Opening	Throat Depth	Jaw Width	Pkg.
10105	10" Automatic Curved Jaw Soft Grip	2"	1 1/4"	1/2"	Carded

Model#	Description	Jaw Opening	Throat Depth	Jaw Width	Pkg.
10110	10" Automatic Straight Jaw	2"	1 1/4"	3/4"	Carded

Model#	Description	Jaw Opening	Throat Depth	Jaw Width	Pkg.
09300	7" Automatic Needle Nose	1 1/2"	2 1/4"	1/2"	Carded

Model#	Description	Jaw Opening	Throat Depth	Jaw Width	Pkg.
09305	7" Automatic Needle Nose Soft Grip	1 1/2"	2 1/4"	1/2"	Carded

AUTOMATIC PLIERS & CLAMPS



Model#	Description	Jaw Opening	Throat Depth	Jaw Width	Inside clearance	Pkg.
06200	7" Automatic C Clamp	2 1/2"	2 1/2"	1/4"	2 3/4"	Carded



Model#	Description	Jaw Opening	Throat Depth	Jaw Width	Inside clearance	Pkg.
06201	7" Automatic C Clamp with Swivel Pads	2 1/2"	2 1/2"	3/4"	2 3/4"	Carded



Model#	Description	Jaw Opening	Throat Depth	Jaw Width	Inside clearance	Pkg.
06205	7" Automatic C Clamp with Swivel Pads Soft Grip	2 1/2"	2 1/2"	3/4"	2 3/4"	Carded



Model#	Description	Jaw Opening	Throat Depth	Jaw Width	Inside clearance	Pkg.
09500	9" Automatic Forked Jaw Welding Clamp	2 1/4"	2 3/4"	2 3/4"		Carded



Model#	Description	Jaw Opening	Throat Depth	Jaw Width	Inside clearance	Pkg.
06206	10" Automatic Long Reach C Clamp	4 1/2"	5"	1/4"	3 1/8"	Carded



Model#	Description	Jaw Opening	Throat Depth	Jaw Width	Inside clearance	Pkg.
06207	10" Automatic Long Reach C Clamp with Swivel Pads	4 1/2"	5"	3/4"	3 1/8"	Carded



Model#	Description	Jaw Opening	Throat Depth	Jaw Width	Inside clearance	Pkg.
10200	11" Automatic C Clamp	3 1/2"	3 3/4"	1/2"	4"	Carded



Model#	Description	Jaw Opening	Throat Depth	Jaw Width	Inside clearance	Pkg.
10201	11" Automatic C Clamp with Swivel Pads	3 1/2"	3 3/4"	1"	4"	Carded



Model#	Description	Jaw Opening	Throat Depth	Jaw Width	Inside clearance	Pkg.
18200	19" Automatic Long Reach C Clamp	10"	11 1/4"	4 1/4"	4 1/4"	Carded



Model#	Description	Jaw Opening	Throat Depth	Jaw Width	Inside clearance	Pkg.
18201	19" Automatic Long Reach C Clamp w/Swivel Pads	9 3/4"	11 1/4"	1/2"	4 1/4"	Carded

AUTOMATIC GROOVE PLIERS



- Patented mechanism maintains parallel jaws for optimal grip
- Fully automatic for true one handed use
- Polypropylene, solvent resistant handles
- Automatically grabs any size without adjusting
- Limited Lifetime Warranty



Model#	Description	Jaw Opening	Throat Depth	Jaw Width	Pkg.
20600	6.5" Automatic Groove Pliers Soft Grip	1"	3/4"	1/4"	Carded



Model#	Description	Jaw Opening	Throat Depth	Jaw Width	Pkg.
20900	9.5" Automatic Groove Pliers Soft Grip	1 1/2"	1"	1/4"	Carded



Model#	Description	Jaw Opening	Throat Depth	Jaw Width	Pkg.
30600	6.5" Automatic Groove Pliers Dipped Handles	1"	3/4"	1/4"	Carded



Model#	Description	Jaw Opening	Throat Depth	Jaw Width	Pkg.
30900	9.5" Automatic Groove Pliers Dipped Handles	1 1/2"	1"	1/4"	Carded

AUTOMATIC SETS



Model#	Description	Pkg.
80200	2 pc. Automatic pliers set includes 10" Curved (10100), 6" Curved (06100)	Carded



Model#	Description	Pkg.
80300	2 pc. Automatic pliers set included (10100) 10" Curved & (09300) 7" Needle Nose	Carded



Model#	Description	Pkg.
80400	2 pc. set includes 10" Curved Jaw (10100) & 9.5" Groove Pliers (20900)	Carded



Model#	Description	Pkg.
80500	2 pc. set includes Automatic Groove Pliers - 6.5" (20600) & 9.5" Soft Grip (20900)	Carded



Model#	Description	Pkg.
80520	2 pc set includes 10" Curved Jaw (10100) , 6.5" Groove Pliers (20600)	Carded



Model#	Description	Pkg.
80530	2 pc. Automatic Groove Pliers - 6.5 (30600)" & 9.5" (30900) Dipped Handle	Carded



Model#	Description	Pkg.
80600	2 pc set includes 10" Curved Jaw (10100) & 9 1/2" (30900) Groove Pliers Dipped Handle	Carded



Model#	Description	Pkg.
80305	2 pc. Automatic pliers set includes 10" Curved (10100), 7" Needle Nose (09300), Needle Nose Soft Grip (09305)	Carded

Pliers and Clamps

AUTOMATIC SETS



Model#	Description	Pkg.
80100	3 pc. Automatic pliers set includes part numbers 10" Curved (10100), 6" Curved (06100) and 7" Needle Nose (09300)	Carded



Model#	Description	Pkg.
80340	5pc Automatic set includes 10" (10100) & 6" (06100) Curved Jaw, 7" Needle Nose (09300) , 6.5"(30600) & 9.5" (30900) Groove Pliers Dipped Handles	Bagged



Model#	Description	Pkg.
80330	4pc Automatic set included 10" Curved (10100), 7" Needle Nose (09300), 6.5" (30600) & 9.5" (30900) Groove Pliers Dipped Handles	Bagged



Model#	Description	Pkg.
80110	4 pc. C-Clamp set includes [2] (06200) 7" C-Clamps & [2] 11" C-Clamps (10200)	Bagged



Model#	Description	Pkg.
80120	4 pc. C-Clamp set includes [2] 7" (06201) & [2] 11" (10201) w/Swivel Pads	Bagged

MANUAL PLIERS & CLAMPS



- Meets all ASME product specifications
- Limited lifetime warranty

- Constructed for quality, strength, and durability
- Durable nickel plate finish



Model#	Description	Jaw Opening	Throat Depth	Jaw Width	Pkg.
70550	5" Curved Jaw Locking Pliers	1 1/4"	1 1/4"	3/8"	Clam Shell



Model#	Description	Jaw Opening	Throat Depth	Jaw Width	Pkg.
70750	7" Curved Jaw Locking Pliers	1 3/4"	1 1/4"	1/2"	Clam Shell



Model#	Description	Jaw Opening	Throat Depth	Jaw Width	Pkg.
70700	7" Straight Jaw Locking Pliers	1 1/2"	1 1/4"	1/2"	Clam Shell



Model#	Description	Jaw Opening	Throat Depth	Jaw Width	Pkg.
71050	10" Curved Jaw Locking Pliers	2"	1 1/2"	1/2"	Clam Shell



Model#	Description	Jaw Opening	Throat Depth	Jaw Width	Pkg.
71000	10" Straight Jaw Locking Pliers	1 3/4"	1 1/4"	5/8"	Clam Shell



Model#	Description	Jaw Opening	Throat Depth	Jaw Width	Pkg.
70650	6" Long Nose Locking Pliers	2"	2"	3/8"	Clam Shell

MANUAL PLIERS & CLAMPS

Pliers and Clamps



Model#	Description	Jaw Opening	Throat Depth	Jaw Width	Pkg.
70950	9" Long Nose Locking Pliers	2 3/4"	2 1/2"	3/8"	Clam Shell



Model#	Description	Jaw Opening	Throat Depth	Jaw Width	Inside clearance	Pkg.
70600	6" Locking C-Clamp	2"	1 3/4"	2 3/8"	2 3/8"	Clam Shell



Model#	Description	Jaw Opening	Throat Depth	Jaw Width	Inside clearance	Pkg.
70620	6" Locking C-Clamp w/pads	1 3/4"	1 3/4"	3/4"	2 3/8"	Clam Shell



Model#	Description	Jaw Opening	Throat Depth	Jaw Width	Pkg.
71100	11" Locking C-Clamp	3 1/2"	3 1/4"	1/2"	Clam Shell



Model#	Description	Jaw Opening	Throat Depth	Jaw Width	Pkg.
71120	11" Locking C-Clamp w/pads	3 1/2"	3 1/4"	1 1/4"	Clam Shell



Model#	Description	Jaw Opening	Throat Depth	Jaw Width	Inside clearance	Pkg.
71800	18" Locking C-Clamp	8"	10"	1/2"	4"	Carded



Model#	Description	Jaw Opening	Throat Depth	Jaw Width	Inside clearance	Pkg.
71825	18" Locking C-Clamp w/pads	8"	10"	1 1/4"	4"	Carded



Model#	Description	Jaw Opening	Throat Depth	Jaw Width	Pkg.
70800	8" Locking Sheet Metal Clamp	1 1/2"	1 3/4"	3"	Clam Shell



Model#	Description	Jaw Opening	Throat Depth	Jaw Width	Pkg.
70900	9" Locking Welding Clamp	2"	2 1/2"	2 3/4"	Clam Shell



Model#	Description	Chain Length	Max Pipe Size	Pkg.
72000	20" Locking Chain Clamp	20"	5"	Clam Shell

LAYOUT



PIVOT SQUARE®



- Precision measurement tool
- Pivots to easily measure or mark any angle
- Locks in angles
- Quickly find roof pitch
- Has three vials that determine roof pitches, indicate grade, and allow for leveling and plumbing

Model#	Description	Pkg.
03060	Machined Aluminum Pivot Square®	Clam Shell
00203	Pivot Square® User's Guide	Bulk
03065	Resin Pivot Square®	Carded

SLIDE SQUARE®



- The next generation square that easily and accurately solves all your layout needs in one tool
- Marks accurate anchor bolt hole locations onto 2" x 4" and 2" x 6" sill plates
- Marks right angles with positive stop at 90°
- Mark common, hip, and valley roof cuts and angles
- Fits in your pocket

Model#	Description	Pkg.
03050	Slide Square®	Carded

ASQUARE®

7" Polymer 45° Folding Layout Asquare



- Folds to store in your tool box
- Measure and Marks angles in degrees
- Great for counter tops, non marring composition, timber, masonry, pavers and much, much more
- High visibility yellow

Model#	Description	Pkg.
04507	7" Polymer Folding Layout Asquare	Tube

12" x 12" Polymer 45° Folding Asquare

Model#	Description	Pkg.
04512	12" x 12" Polymer 45° Folding Asquare	Tube
45121	12" x 12" Polymer 45° Folding Asquare (6 pack per Tube)	Tube

3'x4'x5' 90° Heavy Duty Alum. Folding Layout Asquare



- Only true 3' x 4' x 5' square • Aircraft Aluminum construction
- Collapsing triangle for easy storage • Easy to use, faster, more accurate
- Uses: Carpentry, layout, angle layout, squaring, framing timber, masonry, pavers and much more
- Accurate to within 1/32"

Model#	Description	Pkg.
00345	3'x4'x5' 90° Heavy Duty Alum. Folding Layout Asquare	Tube
34502	3'x4'x5' 90° Heavy Duty Alum. Folding Layout Asquare (3 pack per Tube)	Tube

16" 45° Heavy Duty Alum. Folding Layout Asquare



- Collapsing triangle for easy storage
- Use for layout, carpentry or to measure and mark angles
- Aircraft quality extruded aluminum
- Precision made, positive locking, easier, faster, more accurate
- Angle measurements marked on frame of tool

Model#	Description	Pkg.
04516	16" 45° Heavy Duty Alum. Folding Layout Asquare	Tube
45163	16" 45° Heavy Duty Alum. Folding Layout Asquare (3 pack per Tube)	Tube

54" 45 Degree Heavy Duty Alum. Folding Layout Asquare



- Provides true 90° angle and two 45° angles in a folding layout square
- Aircraft quality extruded aluminum
- Collapsing triangle slides closed for easy storage
- Precision made, Positive locking, easy to use, more accurate, folds to store
- Great for tile work

Model#	Description	Pkg.
00045	54" 45 Degree Heavy Duty Alum. Folding Layout Asquare	Tube
45002	54" 45 Degree Heavy Duty Alum. Folding Layout Asquare (3 pack per tube)	Tube

MEASURING WHEEL

Analog



- 5 digit magnified counter measures up to 10,000 feet
- Telescoping aluminum handle for easy storage
- Limited lifetime warranty
- Heavy duty wheel with rubber tires
- Pistol grip handle for easy use

Model#	Description	Pkg.
11246	4" Measuring Wheel	Carded
11249	13" Measuring Wheel	Carded

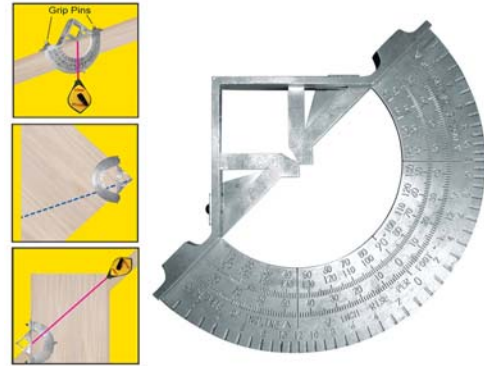
MAGNETIC STUD FINDER™



- Powerful rare earth magnets locate metal and wood studs
- Rotating level for horizontal and vertical leveling
- No batteries required
- Ideal for remodeling, new construction, and DIY projects
- Compact design easily fits in your pocket

Model#	Description	Pkg.
03040	Magnetic Stud Finder™	Carded

Angle Snap®



- Unique layout tool
- Accurately measure and mark sheet goods like plywood and drywall
- Measures in Degrees and Pitches
- Comes with chalk reel
- Easy 1 person marking - two adjustable grip pins anchor tool on desired mark
- Measure angles - use as protractor for finding angles & roof pitches

Model#	Description	Pkg.
03070	AngleSnap®	Carded

PLUMB BOB



- Nickel plated to resist corrosion
- Solid brass cap unscrews to easily center string
- Sharp tapered end for pinpoint accuracy
- 6 sided for roll prevention
- Gravity driven precision

Model#	Description	Pkg.
45905	Plumb Bob 5 Oz Nickel Plated	Clam Shell
45908	Plumb Bob 8 Oz Nickel Plated	Clam Shell
45910	Plumb Bob 10 Oz Nickel Plated	Clam Shell
45912	Plumb Bob 12 Oz Nickel Plated	Clam Shell

PRECISION BALL LEVEL™



- Unique aviation style ball replaces bubble vial for an easier to read level
- Levels and plumbs
- Easily measures angles in degrees or pitches
- Levels in 2 directions at the same time
- Shock resistant end caps

Model#	Description	Pkg.
50024	24" Precision Ball Level	Carded

KNIVES AND BLADES



Knives & Blades

RETRACTABLE BLADE KNIVES

AK24™ Autoload knife



- Purpose built for heavy blade users
- Snap in magazine and trigger feeds blades automatically
- Features two auto load 24 blade magazines with heavy duty SK2 blades
- Quick release allows you to use both ends of blade and remove used blades
- Patented quick change blade replacement cartridge
- Soft grip handle

Model#	Description	Pkg.
03150	AK24™ Autoload knife with 2-24 straight blade cartridges	Carded
03151	AK24™ Replacement blade cartridges (2 ea 12 blades)	Carded

Flip Knife™



- Double ended utility knife
- Two knives in one
- Fast front-end blade changes
- Saves time by using one tool for two functions
- Uses all types of standard blades
- Straight and hook blade included

Model#	Description	Pkg.
03015	Flip Knife™	Carded

FIXED BLADE

SpeedRocker-SS™



- 3 Position, fixed blade Drywall knife
- Tape measure hooks into slot above blade for safer, faster scoring
- Fast front-end blade changes
- Compact design easily fits in hand or tool belt
- 2 utility blades included

Model#	Description	Pkg.
03100	SpeedRocker-SS™ - Fixed Blade	Carded

SureGrip™



- Fixed blade for more cutting power
- Internal blade storage
- Durable Zinc Die Cast housing
- Slip resistant grip
- Built in hang hole
- 2 Utility blades included

Model#	Description	Pkg.
03199	SureGrip™ Fixed Blade Knife	Carded

RETRACTABLE BLADE KNIVES

Retractable Utility Knife



- 4 Position blade lock
- Internal blade storage
- Durable Zinc Die Cast housing
- The Old Faithful of Utility Knives
- Built in hang hole
- 2 Utility blades included

Model#	Description	Pkg.
03099	Retractable Utility Knife	Carded

Slim Line Retractable Knife



- 40% Slimmer Profile, fits easily in pocket
- 4 Position blade lock
- Internal blade storage
- Durable Zinc Die Cast housing
- Low Fat version of Old Faithful
- 2 Utility blades included

Model#	Description	Pkg.
03109	Slim Line Retractable Knife	Carded

Ready-Point™ Snap Off



- 6 blades with 8 tips per blade
- Automatically reloads fresh blade
- Stores up to 6 blades
- Easy grip design
- Positive blade lock
- Use for light or heavy duty applications

Model#	Description	Pkg.
03120	Ready-Point™ 3/8" 9mm	Carded
03130	Ready-Point™ 3/4" 18mm	Carded

REPLACEMENT BLADES



- All purpose utility "notch" blades
- High quality SK2 steel
- Blades fit all standard utility knives
- Dispenser releases one blade at a time
- Deep hook for carpet and roofing

Model#	Description	Pkg.
03010	Utility replacement notched blades 5 pack	Carded
03013	Deep hook blade 5 pack	Carded
03024	Snap-Off Blades 5 Pack 3/8" - 9mm	Carded
03011	Snap-Off Blades 5 Pack 3/4" - 18mm	Carded
03025	Snap-Off Blades 5 Pack 1" - 25mm	Carded

CHALK, REELS AND ACCESSORIES



CHALK HOG™ 100



- Marks longer without refilling
- High Density Poly braided cord snaps cleaner and sharper lines, uses less chalk
- 6x's faster retrieve
- Soft grip body
- Built-in pencil sharpener
- Can be used with or without bottle attached

Model#	Description	Pkg.
12705	Chalk Hog™ 100' Chalk Reel	Carded
12707	Chalk Hog 100' Replacement Line	Carded

CHALK HOG™ 150



- High chalk capacity marks longer
- Snaps cleaner and sharper
- Uses less chalk
- 3x's faster retrieve
- Accepts 8 oz. bottles of chalk
- Easy fill-No mess
- High density poly braided cord
- Soft grip

Model#	Description	Pkg.
12710	Chalk Hog 150™ Chalk Reel high capacity 150' reel	Carded
12720	Roofer's Dual Body Chalk Hog 150™	Box
12712	150' Braided Chalk Line for Chalk Hog™	Carded

3.5X CHALK REEL™



- Fast rewind (3.5x)
- Quick release clutch
- Larger refill port
- Hi-impact plastic
- High strength twisted line holds more chalk for multiple line strikes
- Easy to open

Model#	Description	Pkg.
11009	100 ft. 3.5x Chalk Reel™	Carded

ALUMINUM CHALK REEL



- Durable aluminum alloy construction
- Metal handle
- Large hook for better gripping
- Slide fill opening
- Case doubles as a plumb bob

Model#	Description	Pkg.
11010	50 ft. Aluminum Chalk Reel	Carded
11013	100 ft. Aluminum Chalk Reel	Carded

CHALK REEL COMBO SETS

Aluminum Reel



Model#	Description	Pkg.
11020	100' reel with 4 oz. Red Chalk	Carded
11022	100' reel with 4 oz. Blue Chalk	Carded
11024	100' reel with 4 oz. Glo Orange Chalk	Carded

Mini-Chalk Reel

Model#	Description	Pkg.
11025	25' reel with 4 oz. Red Chalk	Carded
11027	25' reel with 4 oz. Blue Chalk	Carded

Bonus Packs

Model#	Description	Pkg.
11081	100' 3.5x Chalk Reel with 4 oz Blue Chalk and BONUS Line Level	Carded
11082	100' 3.5x Chalk Reel with 4 oz Red Chalk and BONUS Line Level	Carded
11083	100' Aluminum Reel with 4 oz Blue Chalk and BONUS EndMate®	Carded
11084	100' Aluminum Reel with 4 oz Red Chalk and BONUS EndMate®	Carded

Chalk Replacement Lines

Model#	Description	Pkg.
11001	100 ft. Seine Repl. Chalk Line	Carded
11002	50 ft. Seine Repl. Chalk Line	Carded

BOTTLED MARKING CHALK



- High visibility
- Long Lasting
- Fine particle size for consistent marking
- Earth Friendly Blend

Model#	Description	Pkg.
11040	Red 4 oz. Chalk refill	Bottle
11041	White 4 oz. Chalk refill	Bottle
11042	Blue 4oz. Chalk refill	Bottle
11043	Yellow 4 oz. Chalk refill	Bottle
11044	Flo Orange 4.oz Chalk refill	Bottle
11050	Red 8 oz. Chalk refill	Bottle
11051	White 8 oz. Chalk refill	Bottle
11052	Blue 8 oz. Chalk refill	Bottle
11053	Yellow 8 oz. Chalk refill	Bottle
11054	Flo Orange 8 oz. Chalk refill	Bottle
11055	Flo Lime 8 oz. Chalk refill	Bottle
11075	Blue 2.5 lb. Chalk refill	Bottle
11076	Red 2.5 lb. Chalk refill	Bottle
11077	Flo Orange 2.5 lb. Chalk refill	Bottle
11079	Yellow 2.5 lb. Chalk refill	Bottle
11060	Red 5 lb. Chalk refill	Bottle
11061	White 5 lb. Chalk refill	Bottle
11062	Blue 5 lb. Chalk refill	Bottle
11063	Yellow 5 lb. Chalk refill	Bottle
11064	Flo Orange 5 lb. Chalk refill	Bottle
11070	Flo Lime 5 lb. Chalk refill	Bottle

END-MATE® CHALK LINE HOOK



- Swivel action for angle and corner work
- 2 points of contact allow superior grip

Model#	Description	Pkg.
04000	End-Mate® Chalk Line Hook	Carded

MASONRY LINE REELS



- High visibility lines for temporary area marking
- For contractors, carpenters, masons or home use
- For quick, easy unwinding/rewinding
- Reloadable string fits 1" cores 4"-6" long
- #18 Nylon Construction Line

Model#	Description	Pkg.
51000	100' Twisted Gold Line & Reel	cut case
51050	250' Twisted Gold Line & Reel	cut case
53150	250' Braided Pink Line & Reel	cut case
51100	500' Twisted Gold Line & Reel	cut case
53200	500' Braided Pink Line & Reel	cut case
53400	500' Braided FI Lime Line & Reel	cut case
53500	500' Braided FI Orange Line & Reel	cut case

Cut Case



MASONRY LINE REFILLS



- High visibility lines for temporary area marking
- Reloadable string fits 1" cores 4"-6" long
- #18 Nylon Construction Line

Model#	Description	Pkg.
52000	100' Twisted Gold Line	cut case
52050	250' Twisted Gold Line	cut case
52100	500' Twisted Gold Line	cut case
54150	250' Braided Pink Line	cut case
54200	500' Braided Pink Line	cut case

MARKING



RETRACTABLE PENCIL PULL® MEASURE AND MARK



- Self retractable pencil holder that includes a 40"/100cm English/metric tape
- Holds carpenters pencils, crayons, pens, markers and more
- Easily clips on belt, pocket or shirt
- Loaded on a clip strip of 12

Model#	Description	Pkg.
10579	Retractable Pencil Pull® Measure and Mark	Clip strip

RETRACTABLE PENCIL PULL®



- Self retractable pencil holder
- Holds carpenters pencils, crayons, pens, markers and more
- Easily clips on belt, pocket or shirt
- Stop looking for your pencil, the one tool that you don't think you need until you try it
- Loaded on a clip strip of 12

Model#	Description	Pkg.
10570	Retractable Pencil Pull® pencil holder	Clip strip

CARPENTER PENCILS



- Perfect for marking fine lines, molding, saw lines, drill points, etc.
- Std #2 pencil size
- High quality eraser
- Pencils must be ordered in case pack quantities

Model#	Description	Pkg.
10378	Hard Lead - case pack of 72	Boxed
10379	Soft Lead - case pack of 72	Boxed
10380	Medium Lead - case pack of 72	Boxed
10231	Red Lead Carpenter's Pencil - case pack of 72	Boxed
10316	Economy Unfinished Medium Basswood - case pack of 72	Boxed
10398	With Hard Lead (gross) - case pack of 144	Display Box
10399	With Soft Lead (gross) - case pack of 144	Display Box
10400	With Medium Lead (gross) - case pack of 144	Display Box
10560	Sure-Point™ Finish Carpenter's Pencil (Round) - case pack of 144	Boxed
10561	Finish Pencil, Red, Lacquered (Round) - case pack of 144	Boxed

VERSASHARP



- Sharpens carpenter pencils, lumber crayons, standard pencils, and golf tees
- Ergonomically designed for long life of user

Model#	Description	Pkg.
00202	VersaSharp™ Sharpener-25 count	Display Box
00206	Combo 2 Pencils w/ VersaSharp™	Display Box
00208	VersaSharp™ Fish Bowl - 25 count	Display Box
00221	6 Hanson Pencils w/1 VersaSharp	Carded

COMBO MARK



- Double-ended marking tool
- For all your construction marking needs
- Combines carpenter's pencil with lumber crayon
- Marks wood, concrete, metal, or glass

Model#	Description	Pkg.
10456	Combo Mark with yellow lumber crayon	Bulk
10457	Combo Mark with red lumber crayon	Bulk
10458	Combo Mark with blue lumber crayon	Bulk

PENCIL SHARPENER/COMBO



- Finished Carpenter Pencil Kit contains: 4 Sure-Point™, 1 Sure Point™ red finish pencil, and 1 ProSharp™ chuckable pencil sharpener

Model#	Description	Pkg.
02001	Finish Carpenter Pencil Kit	Carded



- 10 of our best selling medium lead carpenter pencils
- Also Includes VersaSharp pencil sharpener
- Sharpener designed to sharpen carpenter pencils, lumber crayons, and standard pencils

Model#	Description	Pkg.
00213	10 Hanson Pencils w/1 VersaSharp	Tube



- 15 of our best selling medium lead round finishing pencils with erasers
- ProSharp™ chuckable pencil sharpener
- Re-usable storage Tube

Model#	Description	Pkg.
02010	ProSharp™ with/15 pencils	Tube

SUPER PENCIL



- 100% solid writing material
- Lasts 7x's longer than standard pencils
- Smudge and water resistant
- Made entirely from non-toxic, graphite composition
- Works with or without sharpening
- Marks wood, paper, concrete, and many other materials
- Break resistant

Model#	Description	Pkg.
10580	Super Pencil	Carded

PENCIL ARMOR®



- Helps prevent pencil from breaking
- Heavy Duty Pocket Clip
- Allow you to use even small pencil stubs
- Shiny Aluminum maximizes pencil appeal

Model#	Description	Pkg.
10405	Pencil Armor®	Display Box
00118	Pencil Armor® and Carp. Pencil - Carded	Display Box

WOOD LUMBER CRAYON HOLDER



- Holds crayon securely for better control
- Helps prevent crayon from breaking
- Allows you to use the full crayon

Model#	Description	Pkg.
10387	Wood Lumber Crayon - Holder	Bulk

CRAYON ARMOR



- Holds crayon securely
- Helps prevent crayon from breaking
- Better control of crayon
- Allow you to use the full crayon

Model#	Description	Pkg.
10404	Crayon Armor® Holder	Display Box
00125	Crayon Armor® Holder and Crayon - Carded	Carded

LUMBER CRAYONS

Premier - Boxed 12



- No Melt Crayon withstands 300F
- Marks lumber, metal, concrete and most other surfaces
- weather/fade/sun resistant
- 1/2" hexagon x 4.5" long
- Extend working life with Crayon Armor®
- UPC number on individual item

Model#	Description	Pkg.
10382	Red Premier	Boxed
10383	Blue Premier	Boxed
10384	Black Premier	Boxed
10385	Yellow Premier	Boxed

Standard - Boxed 12



- For marking wood, metal, concrete
- 1/2" hexagon x 4.5" long
- Extend working life with Crayon Armor®
- UPC number on individual item

Model#	Description	Pkg.
10365	Red Standard	Boxed
10366	Blue Standard	Boxed
10367	Black Standard	Boxed
10368	Yellow Standard	Boxed
10370	White Standard	Boxed

Standard - 2 pack carded

Model#	Description	Pkg.
10352	Blue	Carded
10353	Black	Carded
10356	Red	Carded
10386	Yellow	Carded

Standard - 6 pack carded

Model#	Description	Pkg.
10494	Blue Standard	Carded
10496	Red Standard	Carded
10497	Black Standard	Carded
10498	Yellow Standard	Carded

PAINT CRAYONS

Boxed - 12



- For permanent marking
- Real paint in stick form
- Marks on any surface- wet, dry, oily, or rusty
- Combines durability of paint with easy of use of crayon
- 3/4" x 4-3/4" long • UPC number on individual item

Model#	Description	Pkg.
10470	White Paint Crayons	Boxed
10471	Black Paint Crayons	Boxed
10472	Red Paint Crayons	Boxed
10473	Yellow Paint Crayons	Boxed
10474	Orange Paint Crayons	Boxed
10476	Yellow Flo Paint Crayons	Boxed
10477	Red Flo Paint Crayons	Boxed
10478	Orange Flo Paint Crayons	Boxed

CHINA MARKERS

Boxed - 12



- Marks on china, glass or plastic
- Marks on wet surfaces
- Marking pencils for porous and non-porous surfaces
- Easy peel off wrap
- 5/16" diameter x 6-3/4" long
- UPC number on individual item

Model#	Description	Pkg.
10390	Red China Marker	Boxed
10391	Black China Marker	Boxed
10392	White China Marker	Boxed
10622	Yellow China Marker	Boxed
10623	Green China Marker	Boxed
10625	Blue China Marker	Boxed

Carded - 2 pack

Model#	Description	Pkg.
10260	Black China Marker	Carded
10261	Red China Marker	Carded
10262	White China Marker	Carded
10263	Yellow China Marker	Carded
10264	Green China Marker	Carded
10265	Blue China Marker	Carded

PAINT MARKERS

Carded- Each



- Delivers most permanent, highest visibility mark on all surfaces
- Marks through oily, rusty, greasy films
- Resists water, wear, and UV fading
- Marker cap matches color of the paint
- Perfect for use with stencils
- 1/2" diameter x 5.5" long
- UPC number on individual item

Model#	Description	Pkg.
10360	Black Paint Marker	Carded
10361	White Paint Marker	Carded
10362	Red Paint Marker	Carded
10363	Orange Paint Marker	Carded
10364	Yellow Paint Marker	Carded

Boxed - 12



Model#	Description	Pkg.
10295	Black Paint Markers	Boxed
10296	Orange Paint Markers	Boxed
10297	Red Paint Markers	Boxed
10298	White Paint Markers	Boxed
10299	Yellow Paint Markers	Boxed
10339	Blue Paint Markers	Boxed
10341	Light Brown Paint Markers	Boxed
10343	Light Green Paint Markers	Boxed
10344	Green Paint Markers	Boxed
10345	Pink Paint Markers	Boxed
10346	Purple Paint Markers	Boxed
10347	Light Violet Paint Markers	Boxed
10348	Silver Paint Markers	Boxed
10349	Gold Paint Markers	Boxed

SOAPSTONES



- For marking of welding & cutting lines
- Made of natural soapstone
- Flat 1/2" x 3/16" x 5" long
- Round 1/4" x 5" long
- Square 1/4" sq x 5" long
- For longer writing life use in soapstone holder
- Individual items do not include UPC

Model#	Description	Pkg.
10371	Holder for flat soapstone	Bulk
10372	Holder for round soap stone	Bulk
10375	Flat Soapstone/gross qty of 144	Bulk
10376	Round Soapstone/gross qty of 144	Bulk
10377	Square Soapstone/gross qty of 144	Bulk

RAILROAD CHALK



- For temporary, high visibility marking of surfaces such as metal, wood & concrete
- 7/8" tapered diameter by 4" long
- Smooth chalk formulation for easy glide application

Model#	Description	Pkg.
10374	White Railroad Chalk/box of 144	Bulk
10393	Blue Railroad Chalk/box of 144	Bulk
10394	Yellow Railroad Chalk/box of 144	Bulk
10401	Red Railroad Chalk/box of 144	Bulk

HALF MOON CAKE CARPENTERS CHALK



- Designed for hand marking of chalk lines
- 2-1/2" diameter hemispherical cakes fit easily in your hand
- Bold colors
- 72 pieces per box

Model#	Description	Pkg.
10395	White Half Moon Carpenter Chalk	Bulk
10396	Blue Half Moon White Chalk	Bulk
10397	Red Half Moon Carpenter Chalk	Bulk

BARRICADE SAFETY TAPES

Tape



Rolls are individually upc code labeled

*Non stock item - Call for availability

Length	Legend	3 mil	2 mil	1.5 mil	Pkg
1000 ft.	Attention/Attention	15040	16041	19041	Bulk
1000 ft.	Breathing Air Required In The Area	*16200	*16011		Bulk
1000 ft.	Caution	14995	16090	19000	Bulk
1000 ft.	Caution / Cuidado (Bilingual)	15036	16013		Bulk
1000 ft.	Caution Caution		16000		Bulk
1000 ft.	Caution Construction Area	15018	16009		Bulk
1000 ft.	Caution Crime Scene	15020			Bulk
1000 ft.	Caution Cuidado (Bilingual)		16002		Bulk
1000 ft.	Caution D N E (Bilingual)	15120			Bulk
1000 ft.	Caution Do Not Enter	15002	16004	19004	Bulk
1000 ft.	Caution Do Not Enter/Cuidado No Se Entre		*16006		Bulk
1000 ft.	Caution Hazardous Material	15022			Bulk
1000 ft.	Caution No Parking	15004			Bulk
1000 ft.	Caution Open Trench	15044	16007		Bulk
1000 ft.	Caution Safety Hazard Keep Away	15024			Bulk
1000 ft.	Caution Symbol	15032			Bulk
1000 ft.	Caution Wet Paint	15010	16001		Bulk
1000 ft.	Cuidado Cuidado (Bilingual)	15036	16602		Bulk
1000 ft.	Danger (Red)	14998	16003	19005	Bulk
1000 ft.	Danger Do Not Enter (Red)	15041	16005		Bulk
1000 ft.	Danger Lead Hazard (Red)	*15122	16012		Bulk
1000 ft.	Danger/Peligro (Red) (Bilingual)	15129	16554		Bulk
1000 ft.	Fire Line Do Not Cross	*15034			Bulk
1000 ft.	Garage Sale	*15008			Bulk
1000 ft.	No Legend Yellow Tape	14091			Bulk
1000 ft.	No Legend Red Tape	15412			Bulk
1000 ft.	Peligro No Pasar (Red)	*15061			Bulk
1000 ft.	Peligro Peligro (Red)	*15039			Bulk
1000 ft.	Police Line DNC (Bilingual)	*15049			Bulk
1000 ft.	Police Line Do No Cross	15026			Bulk
1000 ft.	Restricted Area Keep Out	*15121			Bulk
1000 ft.	Restricted Area Keep Out		*16008		Bulk
1000 ft.	Security Line Do Not Cross	*15028			Bulk
1000 ft.	Utility Line Do Not Cross	*15043			Bulk
1000 ft.	Warning Restricted Area (Yellow)	*15016			Bulk

Length	Legend	2 mil	Pkg
300 ft.	Caution	16100	Bulk
300 ft.	Caution / Cuidado (Bilingual)	16102	Bulk
300 ft.	Caution Do Not Enter	16104	Bulk
300 ft.	Caution Wet Paint	16101	Bulk
300 ft.	Caution Do Not Enter	16104	Bulk
300 ft.	Danger Do Not Enter (Red)	16105	Bulk
300 ft.	Caution Do Not Enter	16104	Bulk
300 ft.	Garage Sale	16110	Bulk
300 ft.	Caution Do Not Enter	16104	Bulk
300 ft.	Danger (Red)	16103	Bulk
300 ft.	Danger/Peligro (Red) (Bilingual)	16653	Bulk
200 ft.	Caution	14100	Bulk
200 ft.	Caution Do Not Enter	14101	Bulk

REINFORCED BARRICADE TAPE

5 mil



- Mesh tape for greater strength
- No stretch

Model#	Description	Pkg.
16030	"Caution" Barricade Tape 500 ft.	Bulk w/UPC

DISPENSER BOX

3 mil



- Box dispensed tape
- Easily stands
- Heavy duty 3 mil tape

Model#	Description	Pkg.
14090	1000 ft. roll Caution	Boxed
15140	1000 ft. roll Caution-Do Not Enter	Boxed
15142	1000 ft. roll Danger (Red)	Boxed

2 mil

Model#	Description	Pkg.
16090	1000 ft. roll Caution w/ dispenser	Boxed

TAPE DISPENSER FOR 1000' BARRICADE TAPE



- Tape Dispenser holds 1000 foot Barricade Tape
- Dispense tape with ease
- Easy to reload

Model#	Description	Pkg.
15206	Tape Dispenser	Box

FLAGGING TAPE



- Superior visibility when laying out boundaries
- 1-3/16" wide, Economical and Reusable
- Fluorescent colors are all 150 feet long

Model#	Description	Pkg.
17000	Orange Fluorescent	Display box
17001	Lime Fluorescent	Display box
17002	Red Fluorescent	Display box
17003	Pink Fluorescent	Display box
17004	Green Fluorescent	Display box
17005	Yellow Fluorescent	Display box
17055	Pink Flo/Black Stripe	Display box
17056	Orange Flo/Black Stripe	Display box

Economy



- Superior visibility when laying out boundaries
- 1" wide, Economical and Reusable
- Fluorescent colors are all 150 feet long

Model#	Description	Pkg.
17000-1	Orange Fluorescent	Display box
17001-1	Lime Fluorescent	Display box
17002-1	Red Fluorescent	Display box
17003-1	Pink Fluorescent	Display box
17004-1	Green Fluorescent	Display box
17005-1	Yellow Fluorescent	Display box

FLAGGING TAPE

Standard Colors



- Excellent visibility when laying out boundaries
- 1-3/16" wide Economical and Reusable
- Standard colors are 300 feet

Model#	Description	Pkg.
17020	Standard White	Display box
17021	Standard Red	Display box
17022	Standard Orange	Display box
17023	Standard Blue	Display box
17024	Standard Yellow	Display box
17026	Standard Green	Display box
17027	Standard Black	Display box
17028	Standard Pink	Display box

Stripes & Dots



- Vivid colorization for differentiation
- Excellent visibility when laying out boundaries
- 1-3/16" wide Economical and Reusable
- Standard colors are 300 feet

Model#	Description	Pkg.
17025	Standard Red/White Stripe	Display box
17057	Standard Red/Black Stripe	Display box
17060	Standard Yellow/Black Stripe	Display box
17061	Standard Yellow/White Stripe	Display box
17063	Standard Orange/White Stripe	Display box
17064	Standard Blue/Black Stripe	Display box
17065	Standard Blue/White Stripe	Display box
17066	Standard White w/Blue Polka Dot	Display box
17067	Standard White w/Red Polka Dot	Display box
17068	Standard white w/Orange Polka Dot	Display box

DETECTABLE UNDERGROUND TAPE



- All rolls are 1000 feet long
- 5 mil total thickness
- Aluminum foil core
- Bright APWA approved colors with bold graphic warning
- 35 lb. tensile strength

Model#	Description	Pkg.
16600	2" Dt Blue CA Bur Water L B	Bulk w/UPC
16612	2" Dt Green CA Bur Sewer L B	Bulk w/UPC
16618	2" Dt Green CA Bur Force Main B	Bulk w/UPC
16621	2" Dt Purple CA Bur Reclaimed Water L B	Bulk w/UPC
16624	2" Dt Orange CA Bur Fiber Optic L B	Bulk w/UPC
16627	2" Dt Orange CA Bur Telephone L B	Bulk w/UPC
16630	2" Dt Yellow CA Bur Gas L B	Bulk w/UPC
16633	2" Dt Red CA Bur Electric L B	Bulk w/UPC
16601	3" Dt Blue CA Bur Water L B	Bulk w/UPC
16610	3" Dt Blue CA Bur Irrigation L B	Bulk w/UPC
16613	3" Dt Green CA Bur Sewer L B	Bulk w/UPC
16619	3" Dt Green CA Bur Force Main B	Bulk w/UPC
16622	3" Dt Purple CA Bur Reclaimed Water L B	Bulk w/UPC
16625	3" Dt Orange CA Bur Fiber Optic L B	Bulk w/UPC
16628	3" Dt Orange CA Bur Telephone L B	Bulk w/UPC
16631	3" Dt Yellow CA Bur Gas L B	Bulk w/UPC
16634	3" Dt Red CA Bur Electric L B	Bulk w/UPC
16623	6" Dt Purple CA Bur Reclaimed Water L B	Bulk w/UPC
16611	6" Dt Blue CA Bur Irrigation L B	Bulk w/UPC
11631	6" Dt Yellow CA Bur Gas L B	Bulk w/UPC
16635	6" Dt Red CA Bur Electric L B	Bulk w/UPC
16620	6" Dt Green CA Bur Force Main B	Bulk w/UPC
16614	6" Dt Green CA Bur Sewer L B	Bulk w/UPC
16602	6" Dt Blue CA Bur Water L B	Bulk w/UPC
16626	6" Dt Orange CA Bur Fiber Optic L B	Bulk w/UPC
16629	6" Dt Orange CA Bur Telephone L B	Bulk w/UPC

NON-DETECTABLE UNDERGROUND TAPE



- All rolls are 1000 feet long
- 4 mil total thickness
- Bright APWA approved colors with bold graphic warning
- Economical way of alerting crews of buried lines

Model#	Description	Pkg.
16504	3" Ndt Blue CA Bur Water L B	Bulk w/UPC
16509	3" Ndt Green CA Bur Sewer L B	Bulk w/UPC
16514	3" Ndt Orange CA Bur Fiber Optic L B	Bulk w/UPC
16516	3" Ndt Orange Ca Bur Telephone L B	Bulk w/UPC
16517	3" Ndt Yellow CA Bur Gas L B	Bulk w/UPC
16519	3" Ndt Red CA Bur Electric L B	Bulk w/UPC
16500	6" Ndt Blue CA Bur Water L B	Bulk w/UPC
16502	6" Ndt Green CA Bur Sewer L B	Bulk w/UPC
16511	6" Ndt Green CA - Buried Storm Drain Below	Bulk w/UPC
16515	6" Ndt Orange CA Bur Fiber Optic L B	Bulk w/UPC
16501	6" Ndt Orange CA Bur Telephone L B	Bulk w/UPC
16518	6" Ndt Yellow CA Bur Gas L B	Bulk w/UPC
16503	6" Ndt Red CA Bur Electric L B	Bulk w/UPC

SAFETY TAPE



- Meets NHTSA Conspicuity Regulations
- Easy to apply strip
- Place on trailer sides, bottom of rear door, and ICC bar
- 1 per package

Model#	Description	Pkg.
55301	2" X 24" Reflective Safety Tape White	Carded
55302	2" X 24" Reflective Safety Tape Red	Carded
55303	2" X 24" Reflective Stripes Black/Yellow	Carded
55304	2" X 24" Reflective Stripes Red/White	Carded
55305	2" X 24" D.O.T. Reflective Stripes Red/Silver	Carded

TOOLTAPE™



- Soft grip any tool!
- No slip cushion grip
- Increases comfort and control
- Less fatigue and vibration during use
- 2" wide roll wraps 5 tool handles
- Easy to apply non-adhesive formula

Model#	Description	Pkg.
50029	ToolTape™ Red Tape	Carded
50030	ToolTape™ Blue Tape	Carded
50032	ToolTape™ Black Tape	Carded

AISLE MARKING



- 2" x 54' Roll, or otherwise noted
- Highly visible stripes make it perfect for identifying high traffic areas on floor

Model#	Description	Pkg.
15045	Black/on Yellow	Boxed
15046	Red/on White	Boxed
15047	Red (2' x 108')	Boxed

DUCT TAPE



- 2" x 54' Roll
- Aggressive adhesive for quick and reliable attachment
- High tensile strength for demanding applications
- Easy to tear straight across and down without curling

Model#	Description	Pkg.
15200	Duct Tape	Boxed

APWA COLOR CODE

APWA Uniform Color Code for marking underground utilities

COLOR	Utility Line
WHITE	Proposed Excavation
PINK	Temporary Survey Markings
RED	Electrical Power Lines, Cables, Conduit and Lighting Cables
YELLOW	Gas, Oil, Steam, Petroleum or Gaseous Materials
ORANGE	Communication, Alarm or Signal Lines, Cables or Conduit
BLUE	Potable Water
PURPLE	Reclaimed Water, Irrigation and Slurry Lines
GREEN	Sewer and Drain Lines

Bulk Wire Staff, 2-1/2" x 3-1/2"



- 2-1/2" x 3-1/2" Bundles of 100
- For surveying, construction and agriculture
- Mark location of underground sprinklers, pipes, and lines
- 21" is our most popular seller
- Ask us about custom printing

Model#	Description	Pkg.
15069	15" Orange Flo Marking Flags	Bundle
15070	15" Red Flo Marking Flags	Bundle
15071	15" Pink Flo Marking Flags	Bundle
15072	15" Lime Flo Marking Flags	Bundle
15075	15" Yellow Marking Flag	Bundle
15076	15" Blue Marking Flag	Bundle
15077	15" White Marking Flag	Bundle
15078	15" Orange Marking Flag	Bundle
15079	21" Orange Flo Marking Flag	Bundle
15080	21" Red Flo Marking Flag	Bundle
15081	21" Pink Flo Marking Flag	Bundle
15082	21" Lime Flo Marking Flag	Bundle
15084	21" Yellow Marking Flag	Bundle
15085	21" Blue Marking Flag	Bundle
15086	21" White Marking Flag	Bundle
15101	21" Std. Orange Marking Flag	Bundle
15103	21" Std. Red Marking Flag	Bundle
15042	30" Lime Flo Marking Flag	Bundle
15064	30" Pink Flo Marking Flag	Bundle
15089	30" Orange Flo Marking Flag	Bundle
15093	30" Red Marking Flag	Bundle

Bulk Wire Staff, 4" x 5"



- Oversized flag for added visibility
- 4" x 5" Bundles of 100
- For surveying, construction and agriculture
- Mark location of underground sprinklers, pipes, and lines
- 100 Flags per bundle, Bulk • Ask us about custom printing

Model#	Description	Pkg.
15073	21" Yellow Marking Flag	Bundle
15074	21" Blue Marking Flag	Bundle
15090	21" Orange Flo Marking Flag	Bundle
15091	21" Pink Flo Marking Flag	Bundle
15281	21" Red Flo Marking Flag	Bundle
15282	21" White Marking Flag	Bundle
15283	21" Lime Flo Marking Flag	Bundle
15055	30" Flo Pink Marking Flag	Bundle
15088	30" Orange Flo Marking Flag	Bundle
15094	36" Orange Flo Marking Flag	Bundle

10 PACK - WIRE STAFF



- 2-1/2" x 3-1/2"
- For surveying, construction and agriculture
- Mark location of underground Sprinklers, pipes & lines, etc
- Retail package packaging

Model#	Description	Pkg.
15065	10 ea.- 15" Red Flo Marking Flags	Carded
15066	10 ea.- 15" Pink Flo Marking Flags	Carded
15067	10 ea.- 15" Lime Flo Marking Flags	Carded
15068	10 ea.- 15" Blue Marking Flags	Carded
15275	10 ea.- 15" Glo Orange Marking Flags	Carded

BULK PLASTIC STAFF



- 4" x 5" Bundles of 50
- PVC stake when metal stakes are not desired
- For surveying, construction and agriculture
- Mark location of underground sprinklers, pipes, and lines
- Ask us about custom printing

Model#	Description	Pkg.
10901	18" Flo Pink Marking Flag	Bundle
10900	18" Flo Orange Marking Flag	Bundle
10902	18" Flo Lime Marking Flag	Bundle
10903	18" Flo Rocket Red Marking Flag	Bundle

SAFETY VESTS



- Soft mesh vest
- One size fits all
- Reflective stripe

Model#	Description	Pkg.
55100	Orange glo vest, soft mesh	Carded
55125	Orange glo vest, soft mesh w/ reflective stripe	Carded
55150	Premium vest, wider reflective stripes,	Carded
55110	Lime green vest, soft mesh	Carded
55120	Premium Lime green vest, wider reflective strips and heaviest mesh	Carded
55115	Lime green vest, w/red reflective stripes	Carded

ANSI CL2 SAFETY VESTS



- ANSI Class 2 safety vests
- 100% Polyester open weave mesh
- Adjustable sides: each side has a 1" x 3" velcro strips for easy adjustment, maximum width 56"
- 2" wide silver reflective material
- One side pocket for phone, pens or tools

Model#	Description	Pkg.
55175	ANSI Class 2 Orange Safety Vest	Carded
55180	ANSI Class 2 Lime Safety Vest	Carded

TRAFFIC FLAGS



- High visibility traffic control flags

Model#	Description	Pkg.
55200	Mesh traffic flag with 27" handle	Carded
55300	Nylon traffic flag with handle	Carded

RED WARNING FLAGS FOR LUMBER



- High visibility warning flags
- 300 flags per roll
- Perfect for overside vehicle loads
- Easily stapled to lumber

Model#	Description	Pkg.
10490	12" x 12" Red Lumber Flags	Roll
10495	16" x 16" Red Lumber Flags	Roll

STOP/SLOW PADDLES



- Stop/Slow traffic control sign
- High impact plastic handle for 60" model
- Crossing guard special 10" wood handle
- 18" sign
- For added hand protection during use, we recommend using CH Hanson ToolTape

Model#	Description	Pkg.
55400	Stop / Slow Sign - 60" plastic pole	Bulk
55450	Stop / Slow Sign - 10" wood handle	Bulk

HIGHWAY WARNING KIT



- Highway Warning kit contains three 17" triangles
- Packed in a handy carrying case
- Color scheme includes fluorescent orange for high visibility during the day, and an outer red reflective border for night use

Model#	Description	Pkg.
55600	Highway Warning kit	Box

PRE-CUT STAINLESS STEEL FULL SHIM KITS



- Full Shim Kit contains 20 pieces of each thickness
- Pre-packaged and foam protected in sturdy metal toolbox
- Each kit contains the following thicknesses: .001, .002, .003, .004, .005, .010, .015, .020, .025, .050, .075, .100, .125
- A- 2" x 2", Slot width 5/8", Rec. bolt size 1/4"-5/8"
- B- 3" x 3", Slot width 3/4", Rec. bolt size 1/2"-3/4"
- C- 4" x 4", Slot width 1 1/4", Rec. bolt size 3/4"-1 1/4"
- D- 5" x 5", Slot width 1 5/8", Rec. bolt size 1"-1 5/8"

Model#	Description	Pkg.
A-Ful	A (2" x 2") Full shim kit	Box
B-Ful	B (3" x 3") Full shim kit	Box
C-Ful	C (4" x 4") Full shim kit	Box
D- Ful	D (5" x 5") Full shim kit	Box

PRE-CUT STAINLESS STEEL MINI SHIM KITS

- Mini Shim Kit contains 10 pieces of each thickness
- Pre-packaged and foam protected in sturdy metal toolbox
- Each kit contains the following thicknesses: .001, .002, .003, .004, .005, .010, .015, .020, .025, .050, .075, .100, .125

Model#	Description	Pkg.
A- Mini	A (2" x 2") Mini Shim Kit	Box
B- Mini	B (3" x 3") Mini Shim Kit	Box
C- Mini	C (4" x 4") Mini Shim Kit	Box
D- Mini	D (5" x 5") Mini Shim Kit	Box

PRE-CUT STAINLESS STEEL SHIM PACKS

- Shim Packs contains 20 pieces

Model#	Description	Pkg.
A-001	A (2" x 2") .001" Shim Pk	Box
B-001	A (3" x 3") .001" Shim Pk	Box
C-001	A (4" x 4") .001" Shim Pk	Box
D-001	A (5" x 5") .001" Shim Pk	Box
A-002	A (2" x 2") .002" Shim Pk	Box
B-002	B (3" x 3") .002" Shim Pk	Box
C-002	C (4" x 4") .002" Shim Pk	Box
D-002	D (5" X 5") .002" Shim Pk	Box
A-003	A (2" x 2") .003" Shim Pk	Box
B-003	B (3" x 3") .003" Shim Pk	Box
C-003	C (4" x 4") .003" Shim Pk	Box
D-003	D (5" X 5") .003" Shim Pk	Box
A-004	A (2" x 2") .004" Shim Pk	Box
B-004	B (3" x 3") .004" Shim Pk	Box

C-004	C (4" x 4") .004" Shim Pk	Box
D-004	D (5" x 5") .004" Shim Pk	Box
A-005	A (2" x 2") .005" Shim Pk	Box
B-005	B (3" x 3") .005" Shim Pk	Box
C-005	C (4" x 4") .005" Shim Pk	Box
D-005	D (5" x 5") .005" Shim Pk	Box
A-010	A (2" X 2") .010" Shim Pk	Box
B-010	B (3" x 3") .010" Shim Pk	Box
C-010	C (4" x 4") .010" Shim Pk	Box
D-010	D (5" x 5") .010" Shim Pk	Box
A-015	A (2" X 2") .015" Shim Pk	Box
B-015	B (3" x 3") .015" Shim Pk	Box
C-015	C (4" x 4") .015" Shim Pk	Box
D-015	D (5" x 5") .015" Shim Pk	Box
A-020	A (2" x 2") .020" Shim Pk	Box
B-020	B (3" x 3") .020" Shim Pk	Box
C-020	C (4" x 4") .020" Shim Pk	Box
D-020	D (5" x 5") .020" Shim Pk	Box
A-025	A (2" x 2") .025" Shim Pk	Box
B-025	B (3" x 3") .025" Shim Pk	Box
C-025	C (4" x 4") .025" Shim Pk	Box
D-025	D (5" x 5") .025" Shim Pk	Box
A-050	A (2" x 2") .050" Shim Pk	Box
B-050	B (3" x 3") .050" Shim Pk	Box
C-050	C (4" x 4") .050" Shim Pk	Box
D-050	D (5" x 5") .050" Shim Pk	Box
A-075	A (2" x 2") .075" Shim Pk	Box
B-075	B (3" x 3") .075" Shim Pk	Box
C-075	C (4" x 4") .075" Shim Pk	Box
D-075	D (5" x 5") .075" Shim Pk	Box
A-100	A (2" x 2") .100" Shim Pk	Box
B-100	B (3" x 3") .100" Shim Pk	Box
C-100	C (4" x 4") .100" Shim Pk	Box
D-100	D (5" x 5") .100" Shim Pk	Box
A-125	A (2" x 2") .125" Shim Pk	Box
B-125	B (3" x 3") .125" Shim Pk	Box
C-125	C (4" x 4") .125" Shim Pk	Box
D-125	D (5" x 5") .125" Shim Pk	Box

TYPES OF STAMPS

Individual Letters



Individual Numbers



Reverse

CBA

Reverse stamps have sharp faced characters, extra deep cut for marking drop forging dies, die castings dies, forming dies and molding applications. On a mold stamp the character is engraved normal and reads left to right, giving a reverse impression in the mold. When the product is removed from the mold, the lettering produced is raised and can be read normally.

Low Stress

Round Face & Dot

ABC 2 3 4

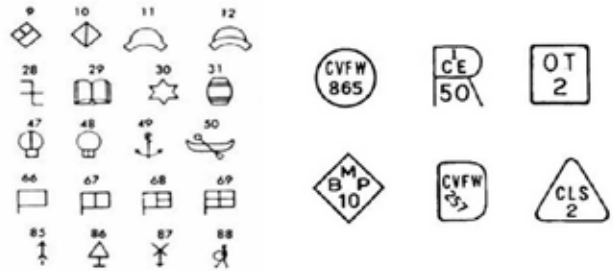
Dot Face Low Stress hand stamp offers the most reduced stress mark by producing a character that is impressed in a dot formation. Round Face Low Stress hand stamp characters are continuous line, round face (not the sharp faced characters found in standard hand stamps). Both stamps are used in the Aircraft, Nuclear and Gas industries or where reduced stress marking is required.

Type & Holder



Steel Type & Holders provides the answer for all batch and general purpose marking. Simply build a series of characters into a holder and with just one strike produce a multi-character mark.

Statement, Code, and Symbols



Code and Symbol stamps allow for production and quality control through permanent marks stamped on part for Certification/ Inspection.

STAMP SELECTION GUIDE



Offering the right stamp for all applications



Grade:	Standard	Heavy Duty	Premier	Rhino
Quality Level:	Standard	Bronze	Silver	Gold
Recommended use:	Medium to light duty	Moderate industrial applications	Ideal for prolonged industrial use	Greatest durability and longevity in all applications
Features:	Standard size shank for hand striking	Oversized shank to deliver more consistent stamp control	Larger shank for better impression and tempered for durability and safety	Largest shank for best impression fully tempered shank Highest quality alloy steel for toughest materials, even stamps materials up to 50 HRC
Character Size			Shank Size	
1/32" .7938mm		1/4" x 2-3/8"	5/16" x 2-1/2"	
1/16" 1.5875mm	1/4" x 2-3/8"	5/16" x 2-1/2"	5/16" x 2-1/2"	
3/32" 2.7781mm	1/4" x 2-3/8"	5/16" x 2-1/2"	5/16" x 2-3/4"	
1/8" 3.1750mm	1/4" x 2-3/8"	5/16" x 2-1/2"	3/8" x 2-3/4"	1/2" x 3-1/2"
5/32" 3.9688mm		3/8" x 2-3/4"	7/16" x 2-3/4"	
3/16" 4.7625mm	5/16" x 2-3/8"	3/8" x 2-3/4"	7/16" x 2-3/4"	9/16" x 3-1/2"
1/4" 6.3500mm	3/8" x 2-5/8"	7/16" x 3"	1/2" x 3"	5/8" x 3-1/2"
5/16" 7.9375mm		9/16" x 3"	9/16" x 3-1/8"	
3/8" 9.5250mm	1/2" x 2-3/4"	9/16" x 3-1/8"	5/8" x 3-1/8"	3/4" x 3-1/2"
1/2" 12.7000mm	5/8" x 3"	3/4" x 3-3/4"	7/8" x 4"	
5/8" 15.875mm		3/4" x 3-3/4"	7/8" x 4"	
1" 25.4mm			1-3/8" x 4-1/2"	

		Material Being Marked								
Grade of Stamp	Frequency Of Use	Wood	Leather	Aluminum	Brass	Sheet Metal	Cold Roll Steel	Stainless Steel	Water, Oil Hardened Steel	Heat Treated Material up to 50 HRC
Standard	Occasional	○	○	○	○	○	○			
Heavy Duty	Moderate	◐	◐	◐	◐	◐	◐			
Premier	Every Day	◑	◑	◑	◑	◑	◑	◑	○	
Rhino	High Volume	●	●	●	●	●	●	●	●	●

Not recommended Good Better Best

STEEL HAND STAMPS - MADE IN THE U.S.A.



Steel Letter Sets

- Letter sets contain 27 pieces A thru Z plus ampersand (&)
- For hand-held, hammer-struck applications
- Tempered shanks for extra safety



Size	Standard		Heavy Duty		Premier		Rhino	
	Model	Wgt (lbs)	Model	Wgt (lbs)	Model	Wgt (lbs)	Model	Wgt (lbs)
1/32"	—	—	20741	1.50	22000	2.25	—	—
1/16"	20100	1.50	20751	1.50	22050	2.25	—	—
3/32"	20150	1.50	20801	2.25	22100	2.38	—	—
1/8"	20200	1.50	20851	2.25	22150	3.25	21730	3.25
5/32"	—	—	20901	3.25	22200	3.50	—	—
3/16"	20250	2.13	20951	3.25	22250	3.50	21750	3.50
1/4"	20300	3.00	21051	5.00	22350	6.00	21760	6.00
5/16"	—	—	21101	6.00	22400	8.00	—	—
3/8"	20350	6.00	21151	8.00	22450	10.50	21770	18.25
1/2"	20400	10.00	21201	17.00	22550	18.25	—	—
5/8"	—	—	21251	23.50	22600	25.00	—	—
1"	—	—	—	—	22750	52.25	—	—

Steel Number Sets

- Number sets contain 9 pieces 0-9 (the 6 is used as a 9)
- For hand-held, hammer-struck applications
- Crowned striking surface ensures full force to the center of the stamp & textured shank provides firm easy grip
- Packed in durable plastic storage containers



Size	Standard		Heavy Duty		Premier		Rhino	
	Model	Wgt (lbs)	Model	Wgt (lbs)	Model	Wgt (lbs)	Model	Wgt (lbs)
1/32"	—	—	21301	0.50	22801	0.75	—	—
1/16"	20501	0.50	21320	0.50	22821	0.75	—	—
3/32"	20521	0.50	21340	0.88	22841	0.88	—	—
1/8"	20541	0.50	21360	0.88	22861	1.25	21830	1.25
5/32"	—	—	21380	1.13	22881	1.38	—	—
3/16"	20561	0.75	21400	1.13	22901	1.38	21850	1.38
1/4"	20581	1.13	21440	1.75	22941	2.25	21870	2.25
5/16"	—	—	21460	2.25	22961	2.75	—	—
3/8"	20601	2.00	21480	2.63	22981	3.50	21880	6.00
1/2"	20621	3.25	21500	2.63	23021	6.00	—	—
5/8"	—	—	21520	8.00	23041	8.13	—	—
1"	—	—	—	—	24001	16.4	—	—

Steel Letter & Number Sets

- The letter & number sets contain the following: 27 pieces A-Z, plus 9 pieces 0-9 (the 6 is used as a 9), ampersand
- Packed in sturdy, steel index box
- Fits flat in tool boxes



Size	Standard		Heavy Duty		Premier	
	Model	Wgt (lbs)	Model	Wgt (lbs)	Model	Wgt (lbs)
1/32"	—	—	21622	3.00	24002	3.75
1/16"	20622	3.00	21623	3.00	24003	3.75
3/32"	20623	3.00	21624	4.38	24004	4.38
1/8"	20624	3.00	21625	4.38	24005	5.38
5/32"	—	—	21626	5.50	24006	5.75
3/16"	20625	3.75	21627	5.50	24007	5.75
1/4"	20626	5.25	21628	8.50	24008	9.50
5/16"	—	—	21629	9.50	24009	12.00
3/8"	20627	9.50	—	—	—	—



Specialty stamps - Reversed, Round Face, Dot Design

Steel Letter Sets

- Letter sets contain 27 pieces A thru Z plus ampersand (&)
- For hand-held, hammer-struck applications
- Tempered shanks for extra safety



Size	Premier Grade					
	Reversed		Round Face		Dot Design	
	Model	Wgt (lbs)	Model	Wgt (lbs)	Model	Wgt (lbs)
1/32"	25000	2.25	—	—	—	—
1/16"	25050	2.25	25700	2.25	—	—
3/32"	25100	2.38	25750	2.38	—	—
1/8"	25150	3.25	25800	3.25	26200	3.25
5/32"	25200	3.50	—	—	—	—
3/16"	25250	3.50	25850	3.50	26250	3.50
1/4"	25300	6.00	25900	6.00	26300	6.00
5/16"	25350	8.00	—	—	—	—
3/8"	25400	10.50	25950	10.50	26350	10.50
1/2"	25450	18.25	26000	18.25	26400	18.25

Steel Number Sets

- Number sets contain 9 pieces 0-9 (the 6 is used as a 9)
- For hand-held, hammer-struck applications
- Crowned striking surface ensures full force to the center of the stamp & textured shank provides firm easy grip
- Packed in durable plastic storage containers



Size	Premier Grade					
	Reversed		Round Face		Dot Design	
	Model	Wgt (lbs)	Model	Wgt (lbs)	Model	Wgt (lbs)
1/32	25501	0.75	—	—	—	—
1/16	25521	0.75	26061	0.75	—	—
3/32	25541	0.88	26081	0.88	—	—
1/8"	25561	1.25	26101	1.25	26601	1.25
5/32	25581	1.38	—	—	—	—
3/16	25601	1.38	26121	1.38	26621	1.38
1/4"	25621	2.25	26141	2.25	26641	2.25
5/16	25641	2.75	—	—	—	—
3/8"	25661	3.50	26161	3.50	26661	3.50
1/2"	25681	6.00	26181	6.00	26681	6.00

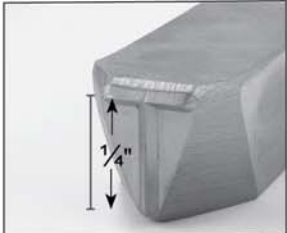
Steel Letter & Number Sets

- The letter & number sets contain the following:
27 pieces A-Z, plus 9 pieces 0-9 (the 6 is used as a 9), ampersand
- Packed in sturdy, steel index box
- Fits flat in tool boxes



Size	Premier Grade					
	Reversed		Round Face		Dot Design	
	Model	Wgt (lbs)	Model	Wgt (lbs)	Model	Wgt (lbs)
1/32	25682	3.75	—	—	—	—
1/16	25683	3.75	26183	3.75	—	—
3/32	25684	4.38	26184	4.38	—	—
1/8"	25685	5.38	26185	5.38	26685	5.38
5/32	25686	5.75	—	—	—	—
3/16	25687	5.75	26187	5.75	26687	5.75
1/4"	25688	9.50	26188	9.50	26688	9.50
5/16	25689	12.00	—	—	—	—

STEEL HAND STAMPS - MADE IN THE U.S.A.



Steel Stamps—Single Pieces Standard, Heavy Duty & Premier

- Individual Stamps
- Choice of Standard, Heavy Duty, Premier, Rhino, Reversed, Round Face, and Dot Design
- To order single pieces, use the letter set part number of the size and grade, followed by the character you wish to order
- For example:
 1/8" Standard Grade Letter "H" is Item Number 20200H
 1/8" Standard Grade Number "5" is Item Number 202005

The size of the stamp describes the actual dimension of the mark that will be made by the stamp.

All Steel Stamp Sets with 1" character height allow at least 2 weeks leadtime

Size	Standard		Heavy Duty		Premier		Rhino		Reversed		Round Face		Dot Design	
	Model	Wgt (lbs)	Model	Wgt (lbs)	Model	Wgt (lbs)	Model	Wgt (lbs)	Model	Wgt (lbs)	Model	Wgt (lbs)	Model	Wgt (lbs)
1/32	—	—	20741	0.04	22000	0.06	—	—	25000	0.06	—	—	—	—
1/16	20100	0.04	20751	0.04	22050	0.06	—	—	25050	0.06	25700	0.06	—	—
3/32	20150	0.04	20801	0.06	22100	0.08	—	—	25100	0.06	25750	0.06	—	—
1/8"	20200	0.04	20851	0.06	22150	0.10	21730	0.06	25150	0.10	25800	0.10	26200	0.10
5/32	—	—	20901	0.10	22200	0.14	—	—	25200	0.14	—	—	—	—
3/16	20250	0.06	20951	0.10	22250	0.14	21750	0.30	25250	0.14	25850	0.14	26250	0.14
1/4"	20300	0.10	21051	0.16	22350	0.18	21760	0.38	25300	0.20	25900	0.20	26300	0.20
5/16	—	—	21101	0.20	22400	0.26	—	—	25350	0.26	—	—	—	—
3/8"	20350	0.20	21151	0.26	22450	0.32	21770	0.50	25400	0.32	25950	0.32	26350	0.30
1/2"	20400	0.32	21201	0.54	22550	0.58	—	—	25450	0.58	26000	0.58	26400	0.56
5/8"	—	—	21251	0.56	22600	0.82	—	—	—	—	—	—	—	—
1"	—	—	—	—	22750	1.70	—	—	—	—	—	—	—	—

NEW 440C Stainless Steel Stamps



- Withstands highly corrosive environments
- Ideal for industries where cross contamination and corrosion resistance are critical
- Letter sets contain 27 pieces A thru Z plus ampersand (&)
- Number sets contain 9 pieces 0-9 (the 6 is used as a 9)

Model#	Description	Dimensions
29100	1/8" Stainless Steel Letter Set	1/2"x1/2"x3"
29150	1/8" Stainless Steel Number Set	1/2"x1/2"x3"
29175	1/8" Stainless Steel Combo Set	1/2"x1/2"x3"
29200	1/4" Stainless Steel Letter Set	1/2"x1/2"x3"
29250	1/4" Stainless Steel Number Set	1/2"x1/2"x3"
29275	1/4" Stainless Steel Combo Set	1/2"x1/2"x3"
29300	3/8" Stainless Steel Letter Set	1/2"x1/2"x3"
29350	3/8" Stainless Steel Number Set	1/2"x1/2"x3"
29375	3/8" Stainless Steel Combo Set	1/2"x1/2"x3"

DO NOT DUPLICATE

- 1/16 Character size
- 1/2 x 3 inches long steel stamp



Model#	Description	Pkg.
26990	Do Not Duplicate	Box

CLAM SHELL PACK

- Retail hangable packaging
- Standard grade stamps



Model#	Description	Pkg.
20683	1/8" Steel Numbers Clam Shell Pack	Graphic Box
20684	3/16" Steel Numbers Clam Shell Pack	Graphic Box
20685	1/4" Steel Numbers Clam Shell Pack	Graphic Box

STAMPING HAMMERS



- Hammers are available with an engraved (fixed) character on one end or both ends
- Hammers are also available with one interchangeable end
- Available with letters, numbers or symbols
- Use these hammers for quick, easy marking by inspectors, etc.
- Available in 1/8", 3/16", 1/4" characters
- 2 character stamping hammers are available on request. Please call for a quote.

Model#	Description	Pkg.
28060	Stamping Hammer With fixed character on one end	Bulk
28061	Stamping Hammer With two fixed ends	Bulk
28062	Stamping Hammer With interchangeable slot	Bulk
28063	Stamping Hammer Insert with character for 28062	Bulk

KITS



- Packed in sturdy, professional grade wooden box
- Includes type holder and type
- 40 pieces: A-Z, 0-9, Dash, 3 Blank Spacers
- 48 pieces also include 8 extra characters of your choice

Model#	Description	Pkg.
27770	40 piece kit of type 1/16"	Box
27771	48 piece kit of type 1/16"	Box
27774	40 piece kit of type 1/8"	Box
27775	48 piece kit of type 1/8"	Box
27778	40 piece kit of type 3/16"	Box
27779	48 piece kit of type 3/16"	Box
27782	40 piece kit of type 1/4"	Box
27783	48 piece kit of type 1/4"	Box

TYPE HOLDERS



- Easily interchangeable letter & numbers
- Save time and money with one step marking
- Made in USA of high shock alloy steel
- Most durable steel type holders on the market
- Unique locking bar prevents type from being inserted incorrectly
- Medium to heavy duty type holder for marking one line of characters into various industrial products
- Type pieces not included with holder

Model#	Description	Pkg.
27600	1/16" Type Holder - character capacity 10	Bagged
27601	1/16" Type Holder - character capacity 16	Bagged
27620	1/8" Type Holder - character capacity 8	Bagged
27621	1/8" Type Holder - character capacity 12	Bagged
27624	1/8" Type Holder - character capacity 15	Bagged
27604	3/16" Type Holder - character capacity 10	Bagged
27605	3/16" Type Holder - character capacity 15	Bagged
27608	1/4" Type Holder - character capacity 8	Bagged
27609	1/4" Type Holder - character capacity 12	Bagged
27610	3/8" Type Holder - character capacity 6	Bagged
27611	3/8" Type Holder - character capacity 10	Bagged
27612	1/2" Type Holder - character capacity 4	Bagged
27613	1/2" Type Holder - character capacity 6	Bagged

TYPE LETTER SETS



- Contains alloy letters from A-Z
- Made in USA

Model#	Description	Pkg.
27640	1/2" Single Piece	Bagged
27630	1/16" Steel Type Letter Sets	Bagged
27632	1/8" Steel Type Letter Sets	Bagged
27634	3/16" Steel Type Letter Sets	Bagged
27636	1/4" Steel Type Letter Sets	Bagged
27638	3/8" Steel Type Letter Sets	Bagged

TYPE NUMBER SETS



- Contains alloy steel numbers from 0-9
- Top quality
- Made in USA

Model#	Description	Pkg.
27631	1/16" Steel Type Number Sets	Bagged
27633	1/8" Steel Type Number Sets	Bagged
27635	3/16" Steel Type Number Sets	Bagged
27637	1/4" Steel Type Number Sets	Bagged
27639	3/8" Steel Type Number Sets	Bagged
27641	1/2" Steel Type Number Sets	Bagged

SINGLE TYPE PIECES



- Individual pieces are letters A-Z or numbers from 0-9
- Made in USA

Model#	Description	Pkg.
27630_	1/16" Single Piece	Bagged
27632_	1/8" Single Piece	Bagged
27634_	3/16" Single Piece	Bagged
27636_	1/4" Single Piece	Bagged
27638_	3/8" Single Piece	Bagged
27640_	1/2" Single Piece	Bagged

TYPE BLANKS/SPACERS



- Used to separate letters, numbers or add spaces
- Made in USA

Model#	Description	Pkg.
27630BL	1/16" Blank Space	Bagged
27632BL	1/8" Blank Space	Bagged
27634BL	3/16" Blank Space	Bagged
27636BL	1/4" Blank Space	Bagged
27638BL	3/8" Blank Space	Bagged
27640BL	1/2" Blank Space	Bagged

INTERLOCKING STENCILS



Single Brass Stencil



- Durable brass re-usable stencil
- To order individual stencils, use the part number below and add the desired character
- For example 1" letter "H" is item number 10008H, 1/2" number "5" is item number 100065
- For additional punctuation characters use the following: BG= Beginner, CM=Comma, DL=Dollar, PE= Period Ender, CE= Cent, DA= Dash, PD=Period, SP= Space

Model#	Description	Pkg.
10006_	1/2" Single Brass Stencil	Bulk
10007_	3/4" Single Brass Stencil	Bulk
10008_	1" Single Brass Stencil	Bulk
10009_	1-1/2" Single Brass Stencil	Bulk
10011_	2" Single Brass Stencil	Bulk
10012_	2-1/2" Single Brass Stencil	Bulk
10013_	3" Single Brass Stencil	Bulk
10014_	4" Single Brass Stencil	Bulk
10015_	5" Single Brass Stencil	Bulk
10016_	6" Single Brass Stencil	Bulk
10160_	8" Single Brass Stencil	Bulk
10161_	10" Single Brass Stencil	Bulk
10162_	12" Single Brass Stencil	Bulk
10175_	1" Vertical Brass Stencil	Bulk
10176_	2" Vertical Brass Stencil	Bulk
10177_	3" Vertical Brass Stencil	Bulk

BRASS STENCILS

15 Piece Single Number Set



- Each set contains 15 pieces as follows: 1 2 3 4 5 6 7 8 9 0 0
- Other: 1-Beginner 1-Plain Ender 1-Dash 1-Period

Model#	Description	Pkg.
10006	1/2" Numbers	Box
10007	3/4" Numbers	Box
10008	1" Numbers	Box
10009	1-1/2" Numbers	Box
10011	2" Numbers	Box
10012	2-1/2" Numbers	Box
10013	3" Numbers	Box
10014	4" Numbers	Box
10015	5" Numbers	Box
10016	6" Numbers	Box

33 Piece Single Letter Set



- Each set contains 33 pieces as follows: All letters (26 pieces A-Z)
- 1-Beginner 1-Period Ender 1-Comma 1-Dash 1-Period 1-Ampersand 1-Apostrophe

Model#	Description	Pkg.
10026	1/2" Letters	Box
10027	3/4" Letters	Box
10028	1" Letters	Box
10029	1-1/2" Letters	Box
10031	2" Letters	Box
10032	2-1/2" Letters	Box
10033	3" Letters	Box
10034	4" Letters	Box
10035	5" Letters	Box
10036	6" Letters	Box

45 Piece Letter & Number Set



- Each set contains 45 pieces as follows: All letters (26 pieces A-Z)
- 1234567890, 1-Beginner, 1-Plain Ender 1-Period Ender, 2-Spacers, 1-Comma, 1-Dash, 1-Period, 1-Ampersand, 1-Apostrophe
- 1-Ampersand 1-Apostrophe

Model#	Description	Pkg.
10066	1/2" Brass Letters & Number Set 45 pc	Box
10067	3/4" Brass Letters & Number Set 45 pc	Box
10068	1" Brass Letters & Number Set 45 pc	Box
10069	1 -1/2" Brass Letters & Number Set 45 pc	Box
10071	2" Brass Letters & Number Set 45 pc	Box
10072	2-1/2" Brass Letters & Number Set 45 pc	Box
10073	3" Brass Letters & Number Set 45 pc	Box
10074	4" Brass Letters & Number Set 45 pc	Box
10075	5" Brass Letters & Number Set 45 pc	Box
10076	6" Brass Letters & Number Set 45 pc	Box

77 Piece Letter & Number Set



- Each set contains 77 pieces as follows: AA BB CC DD EE FF GG HH II JJ K L LL MM NN OO PP Q RR SS TT UU VV WW X Y Z ,
- 11 22 33 44 55 66 77 88 99 00 1-Beginner, 1-Plain Ende,r
- 2-Spacers, 1-Comma, 1-Dash, 2-Period, 1-Period Ender,
- 1-Ampersand, 1-Apostrophe

Model#	Description	Pkg.
10106	1/2" Brass Letters & Number Set 77 pc	Box
10107	3/4" Brass Letters & Number Set 77 pc	Box
10108	1" Brass Letters & Number Set 77 pc	Box
10109	1-1/2" Brass Letters & Number Set 77 pc	Box
10111	2" Brass Letters & Number Set 77 pc	Box
10112	2 -1/2" Brass Letters & Number Set 77 pc	Box
10113	3" Brass Letters & Number Set 77 pc	Box
10114	4" Brass Letters & Number Set 77 pc	Box
10115	5" Brass Letters & Number Set 77 pc	Box
10116	6" Brass Letters & Number Set 77 pc	Box

BRASS STENCILS

92 Piece Letter & Number Set



- Each set contains 92 pieces as follows: AAA BB CC DD EEEE FF GG HH III JJ KK LL MM NNN OOO PP Q RR SSS TT UU VV WW XX YY ZZ 111 22 33 44 55 66 77 88 99 000, 1-Beginner, 1-Plain Ender, 3-Spacers, 1-Period Ender 1-Comma, 1-Dash, 2-Periods, 2-Ampersand, 1-Apostrophe

Model#	Description	Pkg.
10146	1/2" Brass Letters & Number Set 92 pc	Box
10147	3/4" Brass Letters & Number Set 92 pc	Box
10148	1" Brass Letters & Number Set 92 pc	Box
10149	1-1/2" Brass Letters & Number Set 92 pc	Box
10151	2" Brass Letters & Number Set 92 pc	Box
10152	2 -1/2" Brass Letters & Number Set 92 pc	Box
10153	3" Brass Letters & Number Set 92 pc	Box
10154	4" Brass Letters & Number Set 92 pc	Box
10155	5" Brass Letters & Number Set 92 pc	Box
10156	6" Brass Letters & Number Set 92 pc	Box

Consumer Packed Set - Carded



- Solid Brass
- Tri-Lingual Packaging
- Interlocking
- Reusable

Model#	Description	Pkg.
10303	1" Stencil Number (15 pcs.)	Carded
10305	2" Stencil Number (15 pcs.)	Carded
10307	3" Stencil Number (15 pcs.)	Carded
10323	1" Stencil Letter (33 pcs.)	Carded
10325	2" Stencil Letter (33 pcs.)	Carded
10327	3" Stencil Letter (33 pcs.)	Carded

Oversized Letter



- Each set contains 33 pieces as follows: All letters (26 pieces A-Z) 1-Beginner, 1-Period Ender, 1-Spacer, 1-Comma, 1-Dash, 1-Period, 1-&

Model#	Description	Pkg.
10165	8" Gothic Style Letters Set 33 pc	Box
10166	10" Gothic Style Letters Set 33 pc	Box
10167	12" Gothic Style Letters Set 33 pc	Box

Oversized Number



- 13 Pieces as follows: All numbers (10 pieces 0-9) 1-Beginner, 1-Plain Ender, 1-Period

Model#	Description	Pkg.
10165	8" Gothic Style Number Set 13 pc	Box
10166	10" Gothic Style Number Set 13 pc	Box
10167	12" Gothic Style Number Set 13 pc	Box

BRASS STENCILS

Vertical Composition 33 pc Set



- Each set contains 33 pieces as follows: All letters (26 pieces A-Z) 1-Beginner, 1-Period Ender, 1-Spacer, 1-Comma, 1-Dash, 1-Period, 1-&

Model#	Description	Pkg.
10178	1" Vert. Comp. Letters Set 33 pc	Box
10179	2" Vert. Comp. Letters Set 33 pc	Box
10181	3" Vert. Comp. Letters Set 33 pc	Box

Vertical Composition 13 pc Set



- Each set contains 13 pieces as follows: All numbers (10 pieces 0-9) 1-Beginner, 1-Dash, 1-Plain Ender, 1-Period

Model#	Description	Pkg.
10175	1" Vert. Comp. Number Set 13 pc	Box
10176	2" Vert. Comp. Number Set 13 pc	Box
10177	3" Vert. Comp. Number Set 13 pc	Box

Custom Brass & Plastic Stencils



- CH Hanson can cut virtually any message or design in durable .012" thick brass or .015" thick PVC plastic
- Create a permanent stencil of your company's name or logo, or any special design you need
- Call for quote on all custom stencils

PLASTIC



- Made of interlocking flexible PVC plastic
- Interlock together in the corners
- Washable, or clean with a paint solvent
- Each 46 pc set contains: AA BCD EE FGHIJKL MNOPQ RR SS TUVWXYZ 0123456789, 1 ea \$, &, Large space, Small space, Period, and Dash
- 138 pc set contains 3 of the 46 pc set contents
- 46 pc set in tri-lingual package, 138 pc set in industrial pkg

Model#	Description	Pkg.
10191	1" - 46 pc. Plastic Interlocking Stencil	Box
10192	2" - 46 pc. Plastic Interlocking Stencil	Box
10193	3" - 46 pc. Plastic Interlocking Stencil	Box
10194	4" - 46 pc. Plastic Interlocking Stencil	Box
10198	6" - 46 pc. Plastic Interlocking Stencil	Box
10189	1" - 138 pc. Plastic Interlocking Stencil	Box
10190	2" - 138 pc. Plastic Interlocking Stencil	Box
10195	3" - 138 pc. Plastic Interlocking Stencil	Box

PAINT RELEASE SPRAY CAN



- Stops paint from drying to your stencil
- Forms a protective coat that paint can't penetrate
- Prolongs and protects the life of your stencil
- Apply at the start of every season for best results

Model#	Description	Pkg.
12206	12 oz. Spray Can of Paint Release	Boxed

FIGURES WHEELS - BRASS



- Brass figure wheels make numbering jobs quick & easy
- Gothic figures in style shown, with wood handle for turning and locating
- Other custom made stencils in brass or plastic will be quoted on request

Model#	Description	Pkg.
12311	With 1-1/2" figures	Bulk
12310	With 1" figures	Bulk
12312	With 2" figures	Bulk

FOUNTAIN ROLLERS



- Aluminum construction for long wear and tough applications
- FR100 refillable barrel
- Neoprene roller for long wear and fewer replacements

Model#	Description	Pkg.
12122	FR-150 replacement -1.5"	Boxed
12121	FR-100 Marsh - 3"	Boxed
12120	FR-100 Marsh - 1.5"	Boxed
12123	FR-150 replacement -3"	Boxed

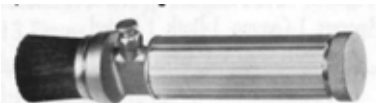
BRISTLE BRUSH



- These varnished wood handle brushes feature a nickel plated steel ferrule for use with ink pot or your own container
- Hog hair bristles
- Can be used with all types of ink

Model#	Description	Pkg.
12001	No. 4 for 1.5" to 2.5" character	Bagged
12002	No. 6 for 3" character	Bagged
12003	No. 8 for 4", 5", 6" character	Bagged
12004	No.10 for 8", 10", 12" character	Bagged
12006	No.14" for 8",10", 12" character	Bagged

FOUNTAIN BRUSH



- Fountain brushes are ideal for big stenciling jobs where speed and convenience are important factors
- Can be used with both all purpose and porous inks

Model#	Description	Pkg.
12008	Marsh FB-26 Fountain Brush	Boxed
12009	Marsh FB-26 Fountain Brush	Boxed

STENCIL INKS



- This ink is ideal for use on boxes, cartons, burlap, paper, metal, plastic, glass, painted or other sealed and unsealed surfaces
- Dries quickly
- Not recommended for space bound aircraft

Model#	Description	Pkg.
12166	White all purpose	quart
12165	Red all purpose	quart
12164	Black all purpose	quart
12162	White all purpose	Gallon
12161	Red all purpose	Gallon
12160	Black all purpose	Gallon

STENCILS - MADE IN THE U.S.A.



1/8" Heavy duty stencils

- Material- 1/8" LDPE
- (Low Density Polyethylene)
- Long Life- built for repetitive daily use
- Will not be damaged by paint or solvents
- Lays flat for the best quality painting
- Precision cut to ensure high quality marking
- Easy to clean and rolls up for easy storage

1/16" Light duty stencils

- Material- 1/16" LDPE
- (Low Density Polyethylene)
- Medium Life- built for occasional use
- Will not be damaged by paint or solvents
- Lays flat for the good quality painting
- Precision cut to ensure good quality marks

Economy

—Traffic

- To promote safety and direct traffic in the parking lot
- 12" characters unless otherwise indicated

—Safety

- Promote safety in and around the factory
- Conforms to OSHA Regulation 1910.145
- 2" character height unless noted otherwise

Commercial - 1/8" Heavy Duty

AHEAD



Model #	Description	Stencil			Pkg.
		Char. Size	Height	Width	
70310	AHEAD	6"X4"	12"	32"	Box
70311	AHEAD	12"X9"	18"	59"	Box
70312	AHEAD	18"X12"	24"	74"	Box
70313	AHEAD	24"X12"	30"	74"	Box
70314	AHEAD	48"X16"	54"	120"	Box
70315	AHEAD	96"X16"	104"	120"	Box

Arrow Combo



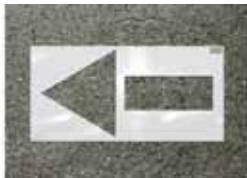
Model #	Description	Stencil			Pkg.
		Char. Size	Height	Width	
70490	Arrow Combo	42" Long	74"	24"	Box
70491	Arrow Combo	62" Long	106"	40"	Box
70492	Arrow Combo	84" Long	144"	48"	Box

Arrow Curved



Model #	Description	Stencil			Pkg.
		Char. Size	Height	Width	
70480	Arrow Curved	42" Long	48"	36"	Box
70481	Arrow Curved	62" Long	70"	48"	Box
70482	Arrow Curved	84" Long	96"	48"	Box

Arrow Straight



Model #	Description	Stencil			Pkg.
		Char. Size	Height	Width	
70470	Arrow Straight	42" Long	48"	24"	Box
70471	Arrow Straight	62" Long	70"	40"	Box
70472	Arrow Straight	84" Long	96"	48"	Box

BIKE



Model #	Description	Stencil			Pkg.
		Char. Size	Height	Width	
70210	BIKE	6"X4"	12"	26.5"	Box
70211	BIKE	12"X9"	18"	48"	Box

BUS



Model #	Description	Stencil			Pkg.
		Char. Size	Height	Width	
70190	BUS	6"X4"	12"	21"	Box
70191	BUS	12"X9"	18"	37"	Box
70192	BUS	18"X12"	24"	46"	Box
70193	BUS	24"X12"	30"	46"	Box
70194	BUS	48"X16"	54"	72"	Box
70195	BUS	96"X16"	104"	72"	Box

COMPACT



Model #	Description	Stencil			Pkg.
		Char. Size	Height	Width	
70150	COMPACT	6"X4"	12"	43"	Box
70151	COMPACT	12"X9"	18"	81"	Box

CUSTOMER



Model #	Description	Stencil			Pkg.
		Char. Size	Height	Width	
70180	CUSTOMER	6"X4"	12"	48.5"	Box
70181	CUSTOMER	12"X9"	18"	92"	Box

Commercial - 1/8" Heavy Duty

DRIVE



Model #	Description	Char. Size	Stencil			Pkg.
			Height	Width		
70110	DRIVE	6"X4"	12"	32"		Box
70111	DRIVE	12"X9"	18"	59"		Box
70112	DRIVE	18"X12"	18"	74"		Box
70113	DRIVE	24"X12"	30"	74"		Box

ENTER



Model #	Description	Char. Size	Stencil			Pkg.
			Height	Width		
70080	ENTER	6"X4"	12"	32"		Box
70081	ENTER	12"X9"	18"	59"		Box
70082	ENTER	18"X12"	24"	74"		Box
70083	ENTER	24"X12"	30"	74"		Box
70084	ENTER	48"X16"	54"	120"		Box
70085	ENTER	96"X16"	104"	120"		Box

EXIT



Model #	Description	Char. Size	Stencil			Pkg.
			Height	Width		
70090	EXIT	6"X4"	12"	26.5"		Box
70091	EXIT	12"X9"	18"	48"		Box
70092	EXIT	18"X12"	24"	60"		Box
70093	EXIT	24"X12"	30"	60"		Box
70094	EXIT	48"X16"	54"	96"		Box
70095	EXIT	96"X16"	104"	96"		Box

FAA Letter/Number



Model #	Description	Char. Size	Stencil			Pkg.
			Height	Width		
70500	FAA Letter/Num	108" (9')	120"	40"		Box
70510	FAA Letter/Num	120" (10')	130"	48"		Box
70520	FAA Letter/Num	144" (12')	156"	48"		Box

FHWA Bike Rider



Model #	Description	Char. Size	Stencil			Pkg.
			Height	Width		
70535	FHWA Bike Rider	48"	54"	36"		Box
70536	FHWA Bike Rider	72"	80"	48"		Box
70537	FHWA Bike Rider	96"	104"	60"		Box

FHWA Combo Arrow



Model#	Description	Char. Size	Pkg.
70533	FHWA Combo Arrow	153"	Box

FHWA Elongated Turn Arrow



Model #	Description	Char. Size	Stencil			Pkg.
			Height	Width		
70534	FHWA Elongated Turn Arrow	96"X32"	104"	48"		Box

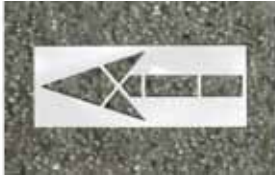
Commercial - 1/8" Heavy Duty

FHWA Shared Bike Lane



Model #	Description	Stencil			Pkg.
		Char. Size	Height	Width	
70538	SHARED BIKE LANE	111"	120"	48"	Box

FHWA Straight Arrow



Model #	Description	Stencil			Pkg.
		Char. Size	Height	Width	
70532	FHWA Straight Arrow	116" (9' 6")	120"	48"	Box

FHWA Turn Arrow



Model#	Description	Char. Size	Pkg.
70531	FHWA Turn Arrow	96" (8')	Box

FIRE



Model #	Description	Stencil			Pkg.
		Char. Size	Height	Width	
70010	FIRE	6"X4"	12"	26.5"	Box
70011	FIRE	12"X9"	18"	48"	Box
70012	FIRE	18"X12"	24"	60"	Box

FIRE LANE



Model #	Description	Stencil			Pkg.
		Char. Size	Height	Width	
70030	FIRE LANE	4"X3"	10"	36"	Box
70031	FIRE LANE	12"X9"	18"	100"	Box
70032	FIRE LANE	18"X12"	24"	120"	Box

Football Numerals



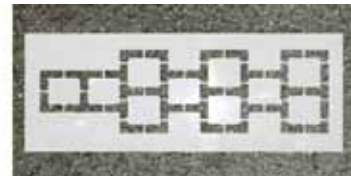
Model#	Description	Char. Size	Pkg.
70610	Football Numerals	36"x24"	Box
70611	Football Numerals	72"x48"	Box

HANDICAP



Model #	Description	Stencil			Pkg.
		Char. Size	Height	Width	
70340	Handicap	21.5"	24"	24"	Box
70341	Handicap	28"	34"	32"	Box
70342	Handicap	34"	40"	36"	Box
70343	Handicap	39"	48"	40"	Box
70344	Handicap	72"	83"	72"	Box

Hop Scotch



Model #	Description	Stencil			Pkg.
		Char. Size	Height	Width	
70580	Hop Scotch	30"x90"	96"	36"	Box
70590	Hop Scotch	30"x100"	106"	36"	Box
70591	Hop Scotch	36"x126"	48"	144"	Box

Commercial - 1/8" Heavy Duty

LANE



Model #	Description	Char. Size	Stencil		Pkg.
			Height	Width	
70020	LANE	6"X4"	12"	26.5"	Box
70021	LANE	12"X9"	18"	48"	Box
70022	LANE	18"X12"	24"	60"	Box

LEFT



Model #	Description	Char. Size	Stencil		Pkg.
			Height	Width	
70230	LEFT	6"X4"	12"	26.5"	Box
70231	LEFT	12"X9"	18"	48"	Box
70232	LEFT	18"X12"	24"	60"	Box
70233	LEFT	24"X12"	30"	60"	Box
70234	LEFT	48"X16"	54"	96"	Box
70235	LEFT	96"X16"	104"	96"	Box

LOADING



Model #	Description	Char. Size	Stencil		Pkg.
			Height	Width	
70160	LOADING	6"X4"	12"	43"	Box
70161	LOADING	12"X9"	18"	81"	Box
70162	LOADING	18"X12"	24"	102"	Box
70163	LOADING	24"X12"	30"	102"	Box

MOTORCYCLE



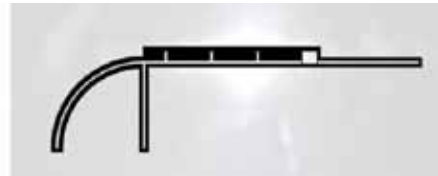
Model #	Description	Char. Size	Stencil		Pkg.
			Height	Width	
70200	MOTORCYCLE	6"X4"	12"	59.5"	Box
70201	MOTORCYCLE	12"X9"	114"	18"	Box

NCAA



Model#	Description	Char. Size	Pkg.
70570	NCAA 3 point line	19'9" Radius	Box

NCAA Basketball Key



Model#	Description	Char. Size	Pkg.
70560	NCAA Basketball key	12'x25'	Box

NO PARKING



Model #	Description	Char. Size	Stencil		Pkg.
			Height	Width	
70000	NO PARKING	4"X3"	10"	36"	Box
70001	NO PARKING	6"X4"	12"	54"	Box
70002	NO PARKING	12"X9"	18"	103"	Box
70003	NO PARKING	18"x 12"	24"	130"	Box
70004	NO PARKING	24"X12"	30"	130"	Box

ONE



Model #	Description	Char. Size	Stencil		Pkg.
			Height	Width	
70130	ONE	6"X4"	12"	21"	Box
70131	ONE	12"X9"	18"	37"	Box
70132	ONE	18"X12"	24"	46"	Box
70133	ONE	24"X12"	30"	46"	Box
70134	ONE	48"X16"	54"	72"	Box
70135	ONE	96"X16"	104"	72"	Box

Commercial - 1/8" Heavy Duty

ONLY



Model #	Description	Stencil			Pkg.
		Char. Size	Height	Width	
70100	ONLY	6"X4"	12"	26.5"	Box
70101	ONLY	12"X9"	18"	48"	Box
70102	ONLY	18"X12"	24"	60"	Box
70103	ONLY	24"X12"	30"	60"	Box
70104	ONLY	48"X16"	54"	96"	Box
70105	ONLY	96"X16"	104"	96"	Box

PARKING



Model #	Description	Stencil			Pkg.
		Char. Size	Height	Width	
70250	PARKING	6"X4"	12"	43"	Box
70251	PARKING	12"X9"	18"	81"	Box
70252	PARKING	18"X12"	24"	102"	Box
70253	PARKING	24"X12"	30"	102"	Box

PEDESTRIAN



Model #	Description	Stencil			Pkg.
		Char. Size	Height	Width	
70280	PEDESTRIAN	6"X4"	12"	59.5"	Box
70281	PEDESTRIAN	12"X9"	18"	114"	Box

PRIVATE



Model #	Description	Stencil			Pkg.
		Char. Size	Height	Width	
70320	PRIVATE	6"X4"	12"	43"	Box
70321	PRIVATE	12"X9"	18"	81"	Box

RESERVED



Model #	Description	Stencil			Pkg.
		Char. Size	Height	Width	
70040	RESERVED	6"X4"	12"	48.5"	Box
70041	RESERVED	12"X9"	18"	92"	Box
70042	RESERVED	18"X12"	24"	116"	Box

RESIDENT



Model #	Description	Stencil			Pkg.
		Char. Size	Height	Width	
70330	RESIDENT	6"X4"	12"	48.5"	Box
70331	RESIDENT	12"X9"	18"	92"	Box

RIGHT



Model #	Description	Stencil			Pkg.
		Char. Size	Height	Width	
70240	RIGHT	6"X4"	12"	32"	Box
70241	RIGHT	12"X9"	18"	59"	Box
70242	RIGHT	18"X12"	24"	74"	Box
70243	RIGHT	24"X12"	30"	74"	Box
70244	RIGHT	48"X16"	54"	120"	Box
70245	RIGHT	96"X16"	104"	120"	Box

SCHOOL



Model #	Description	Stencil			Pkg.
		Char. Size	Height	Width	
70260	SCHOOL	6"X4"	12"	37.5"	Box
70261	SCHOOL	12"X9"	18"	70"	Box
70262	SCHOOL	18"X12"	24"	88"	Box
70263	SCHOOL	24"X12"	30"	88"	Box
70264	SCHOOL	48"X16"	54"	144"	Box
70265	SCHOOL	96"X16"	104"	144"	Box

Commercial - 1/8" Heavy Duty

STAFF



Model #	Description	Char. Size	Stencil		Pkg.
			Height	Width	
70170	STAFF	6"X4"	12"	32"	Box
70171	STAFF	12"X9"	18"	59"	Box

STOP



Model #	Description	Char. Size	Stencil		Pkg.
			Height	Width	
70060	STOP	6"X4"	12"	26.5"	Box
70061	STOP	12"X9"	18"	48"	Box
70062	STOP	18"X12"	24"	60"	Box
70063	STOP	24"X12"	30"	60"	Box
70064	STOP	36"X12"	42"	60"	Box
70065	STOP	48"X16"	54"	96"	Box
70066	STOP	60"X16"	66"	96"	Box
70067	STOP	72"X16"	78"	96"	Box
70068	STOP	96"X16"	104"	96"	Box

THRU



Model #	Description	Char. Size	Stencil		Pkg.
			Height	Width	
70120	THRU	6"X4"	12"	26.5"	Box
70121	THRU	12"X9"	18"	48"	Box
70122	THRU	18"X12"	24"	60"	Box
70123	THRU	24"X12"	30"	60"	Box

TURN



Model #	Description	Char. Size	Stencil		Pkg.
			Height	Width	
70220	TURN	6"X4"	12"	26.5"	Box
70221	TURN	12"X9"	18"	48"	Box
70222	TURN	18"X12"	24"	60"	Box
70223	TURN	24"X12"	30"	60"	Box
70224	TURN	48"X16"	54"	96"	Box
70225	TURN	96"X16"	104"	96"	Box

VISITORS



Model #	Description	Char. Size	Stencil		Pkg.
			Height	Width	
70050	VISITORS	6"X4"	12"	48.5"	Box
70051	VISITORS	12"X9"	18"	92"	Box
70052	VISITORS	18"X12"	24"	116"	Box

WAY



Model #	Description	Char. Size	Stencil		Pkg.
			Height	Width	
70140	WAY	6"X4"	12"	21"	Box
70141	WAY	12"X9"	18"	37"	Box
70142	WAY	18"X12"	24"	46"	Box
70143	WAY	24"X12"	30"	46"	Box
70144	WAY	48"X16"	54"	72"	Box
70145	WAY	96"X16"	104"	72"	Box

Commercial - 1/8" Heavy Duty

X-ING



		Stencil			
Model #	Description	Char. Size	Height	Width	Pkg.
70300	X-ING	6"X4"	12"	32"	Box
70301	X-ING	18"	59"	74"	Box
70302	X-ING	18"X12"	23"	74"	Box
70303	X-ING	48"X16"	54"	120"	Box
70304	X-ING	96"X16"	104"	120"	Box

YIELD



		Stencil			
Model #	Description	Char. Size	Height	Width	Pkg.
70290	YIELD	6"X4"	12"	32"	Box
70291	YIELD	12"X9"	18"	59"	Box
70292	YIELD	18"X12"	24"	74"	Box
70293	YIELD	24"X12"	30"	74"	Box
70294	YIELD	48"X16"	54"	120"	Box
70295	YIELD	96"X16"	104"	120"	Box

ZONE



		Stencil			
Model #	Description	Char. Size	Height	Width	Pkg.
70270	ZONE	6"X4"	12"	26.5"	Box
70271	ZONE	12"X9"	18"	48"	Box
70272	ZONE	18"X12"	24"	60"	Box
70273	ZONE	24"X12"	30"	60"	Box
70274	ZONE	48"X16"	54"	96"	Box
70275	ZONE	96"X16"	104"	96"	Box

Walmart HANDICAP



		Stencil			
Model #	Description	Char. Size	Height	Width	Pkg.
70345	Walmart HANDICAP	84"	92"	92"	Box

Walmart STRAIGHT ARROW



		Stencil			
Model #	Description	Char. Size	Height	Width	Pkg.
70473	Walmart STRAIGHT ARROW	45"	51"	30"	Box

Walmart CURVED ARROW



		Stencil			
Model #	Description	Char. Size	Height	Width	Pkg.
70483	Walmart CURVED ARROW	60"X42"	72"	48"	Box

Walmart SOLID CURVED ARROW 2pc



Model#	Description	Char. Size	Pkg.
70541	Walmart SOLID CURVED ARROW 2pc	96" (8')	Box

Commercial - 1/8" Heavy Duty

Walmart SOLID STRAIGHT ARROW 2pc



Model #	Description	Char. Size	Stencil		Pkg.
			Height	Width	
70542	Walmart SOLID STRAIGHT ARROW 2pc	115" (9'6")	120"	48"	Box

Walmart SOLID COMBO ARROW 3pc



Model#	Description	Char. Size	Pkg.
70543	Walmart SOLID COMBO ARROW 3pc	153"	Box

McDonalds 5 PC kit



Model#	Description	Pkg.
70652	McDonalds 5 PC kit contains 70114, 70124, 70398, 70474, 70399	Box

McDonalds "M"



Model #	Description	Char. Size	Stencil		Pkg.
			Height	Width	
70653	McDonalds "M"	42"X36"	40"	42"	Box

McDonalds "M" Large



Model #	Description	Char. Size	Stencil		Pkg.
			Height	Width	
70654	McDonalds "M" Large	74"X64"	80"	72"	Box

McDonald Speedy "M"



Model #	Description	Char. Size	Stencil		Pkg.
			Height	Width	
70655	McDonalds Speedy "M"	40"X40"	48"	48"	Box

McDonalds DRIVE



Model #	Description	Char. Size	Stencil		Pkg.
			Height	Width	
70114	McDonalds DRIVE	34"	40"	83"	Box

McDonalds THRU



Model #	Description	Char. Size	Stencil		Pkg.
			Height	Width	
70124	McDonalds THRU	34"	40"	79"	Box

McDonalds THANK



Model #	Description	Char. Size	Stencil		Pkg.
			Height	Width	
70399	McDonalds THANK	34"	40"	87"	Box

McDonalds YOU



Model #	Description	Char. Size	Stencil		Pkg.
			Height	Width	
70398	McDonalds YOU	34"	40"	52"	Box

Commercial - 1/8" Heavy Duty

McDonalds CIRCLE ARROW



		Stencil			
Model #	Description	Char. Size	Height	Width	Pkg.
70474	McDonalds CIRCLE ARROW	29.5" Arrow, 42" circle	48"	48"	Box

Walgreens Electric Car Logo



		Stencil			
Model #	Description	Char. Size	Height	Width	Pkg.
70581	Walgreens Electric Car Logo	42"X42"	48"	48"	Box

Walgreens STOP



		Stencil			
Model #	Description	Char. Size	Height	Width	Pkg.
70069	Walgreens STOP	24"X12"	30"	60"	Box

Walgreens DRIVE



		Stencil			
Model #	Description	Char. Size	Height	Width	Pkg.
70115	Walgreens DRIVE	24"X12"	30"	74"	Box

Walgreens THRU



		Stencil			
Model #	Description	Char. Size	Height	Width	Pkg.
70125	Walgreens THRU	24"X12"	30"	60"	Box

Walgreens Arrow - Straight



		Stencil			
Model #	Description	Char. Size	Height	Width	Pkg.
70475	Walgreens Arrow - Straight	42"X42"	48"	48"	Box

Walgreens Arrow - Curve



		Stencil			
Model #	Description	Char. Size	Height	Width	Pkg.
70485	Walgreens Arrow - Curved	66"X66"	69"	69"	Box

Commercial - 1/8" Heavy Duty

Letter Kit 29 pc.



Letter Kit 38 pc.



Model #	Description	Stencil			Pkg.
		Char. Size	Height	Width	
70410	29 Pc HWY Font	3"x2"	7"	4"	Box
70411	29 Pc For Curb Marking	3"x2"	10"	4"	Box
70412	29 Pc HWY Font	4"x2.75"	8"	4.75"	Box
70413	29 Pc For Curb Marking	4"x2.75"	10"	4.75"	Box
70414	29 Pc HWY Font	5"x3.25"	9"	5.35"	Box
70415	29 Pc HWY Font	6"x4"	10"	6"	Box
70416	29 Pc HWY Font	8"x5.25"	12"	7.25"	Box
70417	29 Pc HWY Font	10"x6.6"	14"	8.6"	Box
70418	29 Pc HWY Font	12"x9"	16"	11"	Box
70419	29 Pc HWY Font	15"x9"	19"	11"	Box
70420	29 Pc HWY Font	18"x9"	22"	11"	Box
70421	29 Pc HWY Font	18"x12"	22"	14"	Box
70422	29 Pc HWY Font	20"x9"	24"	11"	Box
70423	29 Pc HWY Font	20"x12"	24"	14"	Box
70424	29 Pc HWY Font	24"x9"	28"	11"	Box
70425	29 Pc HWY Font	24"x12"	28"	13"	Box
70426	29 Pc HWY Font	30"x12"	34"	14"	Box
70427	29 Pc HWY Font	36"x12"	40"	14"	Box
70428	29 Pc DOT Font	36"x16"	40"	18"	Box
70429	29 Pc DOT Font	48"x16"	52"	18"	Box
70430	29 Pc DOT Font	60"x16"	64"	18"	Box
70431	29 Pc DOT Font	72"x16"	76"	18"	Box
70432	29 Pc DOT Font	96"x16"	100"	18"	Box

Model #	Description	Stencil			Pkg.
		Char. Size	Height	Width	
70440	38 Pc HWY Font	3"x2"	7"	4"	Box
70441	38 Pc For Curb Marking	3"x2"	10"	4"	Box
70442	38 Pc HWY Font	4"x2.75"	8"	4.75"	Box
70443	38 Pc For Curb Marking	4"x2.75"	10"	4.75"	Box
70444	38 Pc HWY Font	5"x3.25"	9"	5.25"	Box
70445	38 Pc HWY Font	6"x4"	10"	6"	Box
70446	38 Pc HWY Font	8"x5.25"	12"	7.25"	Box
70447	38 Pc HWY Font	10"x6.6"	14"	8.6"	Box
70448	38 Pc HWY Font	12"x9"	16"	11"	Box
70449	38 Pc HWY Font	15"x9"	19"	11"	Box
70450	38 Pc HWY Font	18"x9"	22"	11"	Box
70451	38 Pc HWY Font	18"x12"	22"	14"	Box
70452	38 Pc HWY Font	20"x9"	24"	11"	Box
70453	38 Pc HWY Font	20"x12"	24"	14"	Box
70454	38 Pc HWY Font	24"x9"	28"	11"	Box
70455	29 Pc HWY Font	24"x12"	28"	13"	Box
70456	38 Pc HWY Font	30"x12"	34"	14"	Box
70457	38 Pc HWY Font	36"x12"	40"	14"	Box
70458	38 Pc DOT Font	36"x16"	40"	18"	Box
70459	38 Pc DOT Font	48"x16"	52"	18"	Box
70460	38 Pc DOT Font	60"x16"	64"	18"	Box
70461	38 Pc DOT Font	72"x16"	76"	18"	Box
70462	38 Pc DOT Font	96"x16"	100"	18"	Box

Large Format Stencils

Commercial - 1/8" Heavy Duty

Number Kit 12 pc.



Number Kit 18 pc.



Large Format Stencils

Model #	Description	Stencil			Pkg.
		Char. Size	Height	Width	
70350	12 Pc HWY Font	3"x2"	7"	4"	Box
70351	12 Pc For Curb Marking	3"x2"	10"	4"	Box
70352	12 Pc HWY Font	4"x2.75"	8"	4.75"	Box
70353	12 Pc For Curb Marking	4"x2.75"	10"	4.75"	Box
70354	12 Pc HWY Font	5"x3.25"	9"	5.25"	Box
70355	12 Pc HWY Font	6"x4"	10"	6"	Box
70356	12 Pc HWY Font	8"x5.25"	12"	7.25"	Box
70357	12 Pc HWY Font	10"x6.6"	14"	8.6"	Box
70358	12 Pc HWY Font	12"x9"	16"	11"	Box
70359	12 Pc HWY Font	15"x9"	19"	11"	Box
70360	12 Pc HWY Font	18"x9"	22"	11"	Box
70361	12 Pc HWY Font	18"x12"	22"	14"	Box
70362	12 Pc HWY Font	20"x9"	24"	11"	Box
70363	12 Pc HWY Font	20"x12"	24"	14"	Box
70364	12 Pc HWY Font	24"x9"	28"	11"	Box
70365	12 Pc HWY Font	24"x12"	28"	14"	Box
70366	12 Pc HWY Font	36"x12"	40"	14"	Box
70367	12 Pc DOT Font	48"x16"	52"	18"	Box

Model #	Description	Stencil			Pkg.
		Char. Size	Height	Width	
70380	18 Pc HWY Font	3"x2"	7"	4"	Box
70381	18 Pc For Curb Marking	3"x2"	10"	4"	Box
70382	18 Pc HWY Font	4"x2.75"	8"	4.75"	Box
70383	18 Pc For Curb Marking	4"x2.75"	10"	4.75"	Box
70384	18 Pc HWY Font	5"x3.25"	9"	5.25"	Box
70385	18 Pc HWY Font	6"x4"	10"	6"	Box
70386	18 Pc HWY Font	8"x5.25"	12"	7.25"	Box
70387	18 Pc HWY Font	10"x6.6"	14"	8.6"	Box
70388	18 Pc HWY Font	12"x9"	16"	11"	Box
70389	18 Pc HWY Font	15"x9"	19"	11"	Box
70390	18 Pc HWY Font	18"x9"	22"	11"	Box
70391	18 Pc HWY Font	18"x12"	22"	14"	Box
70392	18 Pc HWY Font	20"x9"	24"	11"	Box
70393	18 Pc HWY Font	20"x12"	24"	14"	Box
70394	18 Pc HWY Font	24"x9"	28"	11"	Box
70395	18 Pc HWY Font	24"x12"	28"	11"	Box
70396	18 Pc HWY Font	36"x12"	40"	14"	Box
70397	18 Pc DOT Font	48"x16"	52"	18"	Box

Commercial - 1/8" Heavy Duty

Individual Characters



Model#	Description	Char. Size	Pkg.
70830	Ind Characters (Any letter)	48"x16"	Box
70835	Ind Characters (Any letter)	60"x16"	Box
70840	Ind Characters (Any letter)	72"x16"	Box
70850	Ind Characters A	96"x16"	Box
70851	Ind Characters B	96"x16"	Box
70852	Ind Characters C	96"x16"	Box
70853	Ind Characters D	96"x16"	Box
70854	Ind Characters E	96"x16"	Box
70855	Ind Characters F	96"x16"	Box
70856	Ind Characters G	96"x16"	Box
70857	Ind Characters H	96"x16"	Box
70858	Ind Characters I	96"x16"	Box
70859	Ind Characters J	96"x16"	Box
70860	Ind Characters K	96"x16"	Box
70861	Ind Characters L	96"x16"	Box
70862	Ind Characters M	96"x16"	Box
70863	Ind Characters N	96"x16"	Box
70864	Ind Characters O	96"x16"	Box
70865	Ind Characters P	96"x16"	Box
70866	Ind Characters Q	96"x16"	Box
70867	Ind Characters R	96"x16"	Box
70868	Ind Characters S	96"x16"	Box
70869	Ind Characters T	96"x16"	Box
70870	Ind Characters U	96"x16"	Box
70871	Ind Characters V	96"x16"	Box
70872	Ind Characters W	96"x16"	Box
70873	Ind Characters X	96"x16"	Box
70874	Ind Characters Y	96"x16"	Box
70875	Ind Characters Z	96"x16"	Box

Custom Words



Model#	Description	Char. Size	Pkg.
70801	Custom Word	3"x2"	Box
70802	Custom Word	4"x2.5"	Box
70803	Custom Word	6"x4"	Box
70804	Custom Word	8"x5.5"	Box
70805	Custom Word	10"x6.6"	Box
70806	Custom Word	12"x9"	Box
70807	Custom Word	15"x9"	Box
70808	Custom Word	16"x9"	Box
70809	Custom Word	18"x12"	Box
70810	Custom Word	20"x12"	Box
70811	Custom Word	24"x12"	Box
70812	Custom Word	30"x12"	Box
70813	Custom Word	36"x12"	Box

Blank Sheet

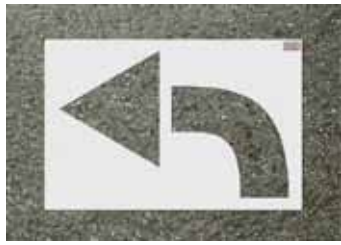


Model #	Description	Char. Size	Stencil		Pkg.
			Height	Width	
77777	4' x 8' blank sheet	4' x 8'	4'	8'	Box
77778	4' x 10' blank sheet	4' x 10'	4'	10'	Box

Large Format Stencils

Commercial - 1/16" Light Duty

CURVED ARROW - 1/16" Light Duty



Model #	Description	Char. Size	Stencil			Pkg.
			Height	Width		
72025	CURVED ARROW	42" LONG	48"	36"		Box

ENTER - 1/16" Light Duty



Model #	Description	Char. Size	Stencil			Pkg.
			Height	Width		
72080	ENTER	6" X 4"	12"	32"		Box
72130	ENTER	12" X 9"	18"	59"		Box

EXIT - 1/16" Light Duty



Model #	Description	Char. Size	Stencil			Pkg.
			Height	Width		
72075	EXIT	6" X 4"	12"	26"		Box
72125	EXIT	12" X 9"	18"	59"		Box

FIRE LANE - 1/16" Light Duty



Model #	Description	Char. Size	Stencil			Pkg.
			Height	Width		
72035	FIRE LANE	4" X 3"	10"	36"		Box
72065	FIRE LANE	6" X 4"	12"	54"		Box
72115	FIRE LANE	12" X 9"	18"	100"		Box

HANDICAP - 1/16" Light Duty



Model #	Description	Char. Size	Stencil			Pkg.
			Height	Width		
72001	Handicap	21.5"	24"	24"		Box
72005	Handicap	28"	34"	32"		Box
72010	Handicap	34"	40"	36"		Box
72015	Handicap	39"	48"	40"		Box

Line Stencil - 1/16" Light Duty

Model #	Description	Char. Size	Stencil			Pkg.
			Height	Width		
72143	Line Stencil	18' x 4"	9"	18'6"		Box

NO PARKING - 1/16" Light Duty



Model #	Description	Char. Size	Stencil			Pkg.
			Height	Width		
72030	NO PARKING	4" X 3"	10"	36"		Box
72090	NO PARKING	6" X 4"	12"	54"		Box
72140	NO PARKING	12" X 9"	18"	103"		Box

RESERVED - 1/16" Light Duty



Model #	Description	Char. Size	Stencil			Pkg.
			Height	Width		
72060	RESERVED	6" X 4"	12"	48"		Box
72110	RESERVED	12" X 9"	18"	92"		Box

Commercial - 1/16" Light Duty

SLOW - 1/16" Light Duty



Model #	Description	Stencil			Pkg.
		Char. Size	Height	Width	
72095	SLOW	6" X 4"	12"	26"	Box
72145	SLOW	12" X 9"	18"	59"	Box

STOP - 1/16" Light Duty



Model #	Description	Stencil			Pkg.
		Char. Size	Height	Width	
72085	STOP	6" X 4"	12"	26"	Box
72135	STOP	12" X 9"	18"	59"	Box

STRAIGHT ARROW - 1/16" Light Duty



Model #	Description	Stencil			Pkg.
		Char. Size	Height	Width	
72020	STRAIGHT ARROW	42" LONG	48"	24"	Box

VISITORS - 1/16" Light Duty



Model #	Description	Stencil			Pkg.
		Char. Size	Height	Width	
72070	VISITORS	6" X 4"	12"	48"	Box
72120	VISITORS	12" X 9"	18"	92"	Box

Alpha Kit 29 Pc. - 1/16" Light Duty



Model #	Description	Stencil			Pkg.
		Char. Size	Height	Width	
72100	Alpha Kit 29 Pc.	12" X 9"	16"	11"	Box
72040	Alpha Kit 29 Pc.	4" X 3"	8"	4.75"	Box
72050	Alpha Kit 29 Pc.	6" X 4"	10"	6"	Box

Number Kit 12 Pc. - 1/16" Light Duty



Model #	Description	Stencil			Pkg.
		Char. Size	Height	Width	
72045	Number Kit 12 Pc.	4" X 3"	8"	4.75"	Box
72105	Number Kit 12 Pc.	12" X 9"	16"	11"	Box
72055	Number Kit 12 Pc.	6" X 4"	10"	6"	Box

ECONOMY - TRAFFIC



- To promote safety and direct traffic in the parking lot
- 12" characters unless otherwise indicated
- Made of .015" PVC plastic 1/64"
- Large, easy to read characters and symbols

Model#	Description	Pkg.
12430	NO PARKING	Tube
12431	HANDICAP	Tube
12432	FIRE LANE	Tube
12433	EXIT ONLY	Tube
12434	RESERVED	Tube
12435	VISITORS	Tube
12436	Straight Arrow Symbol - 20" long	Tube
12437	Curved Arrow Symbol	Tube
12438	Handicap Symbol - 43" high	Tube
12439	ENTRANCE	Tube
12441	DISABLED	Tube
12460	Stencil Parking Lot Kit inc. 12430, 12434, 12435, 12436, 12437, 12438	Tube

ECONOMY - SAFETY



- To promote safety in and around the factory
- 2" characters unless otherwise indicated
- Made of .015" PVC plastic 1/64"
- Conforms to OSHA Regulation 1910.145
- Reusable

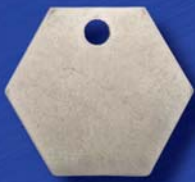
Model#	Description	Pkg.
12400	NO SMOKING	Carded
12401	NO PARKING	Carded
12402	KEEP OUT	Carded
12403	NO TRESPASSING	Carded
12404	FOR SALE	Carded
12405	FOR RENT	Carded
12406	DANGER - 2.5" Characters	Carded
12407	CAUTION - 2.5" Characters	Carded
12408	WARNING -2.5" Characters	Carded
12409	(Arrow Symbol) 10" long	Carded
12410	FLAMMABLE	Carded
12411	EXIT	Carded
12412	HIGH VOLTAGE	Carded
12413	FIRE EXTINGUISHER	Carded
12414	GARAGE SALE	Carded
12415	BIO HAZARD	Carded
12416	(Handicapped Sym) -15.5" dia.	Carded
12417	(No Parking Sym) - 15.5" dia.	Carded
12418	(No Smoking Sym)- 15.5" dia	Carded
12420	WATCH YOUR STEP - 3" char.	Carded
12421	KEEP AISLE CLEAR - 3" char.	Carded

Blank Metal Tags

TAGS - BLANK METAL - MADE IN THE U.S.A.



Samples of Tag Shapes



Hexagon



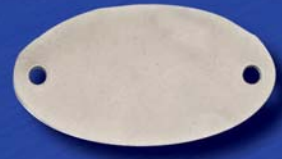
Octagon



Round w/ear



Round



Oval



Round Ends



Round Corners



Rectangle w/notched corners



Square

Hexagon Tags



Aluminum



Brass



Stainless Steel



- All Brass and Aluminum Tags are made from 18 Gauge Material
- All Stainless Steel Tags are made from 20 Gauge Material
- 316 Stainless Steel delivers maximum durability for extreme conditions

Model#	Description	Dimensions	Hole Size	holes	Die Reference	Pkg.
41250	Aluminum	1-1/16"	1/8"	1	928A	Bagged
41260	Aluminum	1-1/4"	3/16"	1	932A	Bagged
41482	Brass	1-1/16"	1/8"	1	928B	Bagged
41261	Brass	1-1/4"	3/16"	1	932B	Bagged
41483	Stainless Steel	1-1/16"	1/8"	1	928S	Bagged
41262	Stainless Steel	1-1/4"	3/16"	1	932S	Bagged
43130	316 Stainless Steel	1-1/4"	3/16"	1	932	Bagged

Blank Metal Tags

Octagon Tags



Aluminum



Brass



Stainless Steel



- All Brass and Aluminum Tags are made from 18 Gauge Material
- All Stainless Steel Tags are made from 20 Gauge Material
- 316 Stainless Steel delivers maximum durability for extreme conditions

Model#	Description	Dimensions	Hole Size	holes	Die Reference	Pkg.
41516	Aluminum	1-1/64"	3/16"	1	943A	Bagged
41526	Aluminum	1-1/4"	3/16"	1	947A	Bagged
41531	Aluminum	1-1/2"	3/16"	1	950A	Bagged
41517	Brass	1-1/64"	3/16"	1	943B	Bagged
41527	Brass	1-1/4"	3/16"	1	947B	Bagged
41532	Brass	1-1/2"	3/16"	1	950B	Bagged
41518	Stainless Steel	1-1/64"	3/16"	1	943S	Bagged
41528	Stainless Steel	1-1/4"	3/16"	1	947S	Bagged
41533	Stainless Steel	1-1/2"	3/16"	1	950S	Bagged
43133	316 Stainless Steel	1-1/8"	3/16"	1	945	Bagged
43131	316 Stainless Steel	1-1/4"	3/16"	1	947	Bagged
43132	316 Stainless Steel	1-1/2"	3/16"	1	950	Bagged

Round Tags



Anodized



Aluminum



Brass



Stainless Steel



- All Brass and Aluminum Tags are made from 18 Gauge Material
- All Stainless Steel Tags are made from 20 Gauge Material
- 316 Stainless Steel delivers maximum durability for extreme conditions
- Anodized Aluminum Red, Blue, Black, Green, Orange, Yellow are 18 Gauge and Gold is 20 Gauge

Model#	Description	Dimensions	Hole Size	holes	Die Reference	Pkg.
41821	Aluminum	1" diameter	3/16"	1	1078A	Bagged
41831	Aluminum	1-3/32" diameter	3/16"	1	1085A	Bagged
41841	Aluminum	1-1/4" diameter	3/16"	1	1090A	Bagged
41846	Aluminum	1-3/8" diameter	3/16"	1	1094A	Bagged
41856	Aluminum	1-1/2" diameter	3/16"	1	1098A	Bagged
41881	Aluminum	2" diameter	3/16"	1	1110A	Bagged
41822	Brass	1" diameter	3/16"	1	1078B	Bagged
41832	Brass	1-3/32" diameter	3/16"	1	1085B	Bagged
41842	Brass	1-1/4" diameter	3/16"	1	1090B	Bagged
41847	Brass	1-3/8" diameter	3/16"	1	1094B	Bagged
41849	Brass	1-3/8" diameter	3/8"	1	1094M	Bagged
41857	Brass	1-1/2" diameter	3/16"	1	1098B	Bagged
41882	Brass	2" diameter	3/16"	1	1110B	Bagged
41823	stainless Steel	1" diameter	3/16"	1	1078S	Bagged
41833	stainless Steel	1-3/32" diameter	3/16"	1	1085S	Bagged
41843	stainless Steel	1-1/4" diameter	3/16"	1	1090S	Bagged
41848	stainless Steel	1-3/8" diameter	3/16"	1	1094S	Bagged
41858	stainless Steel	1-1/2" diameter	3/16"	1	1098S	Bagged
41883	stainless Steel	2" diameter	3/16"	1	1110S	Bagged
43122	316 stainless Steel	1"	3/16"	1	1078	Bagged
43123	316 stainless Steel	1-1/4"	3/16"	1	1090	Bagged
43124	316 stainless Steel	1-3/8"	3/16"	1	1094	Bagged
43125	316 stainless Steel	1-1/2"	3/16"	1	1098	Bagged
43126	316 stainless Steel	2"	3/16"	1	1110	Bagged
43008	Anodized Aluminum - Red	1" diameter	3/16"	1	1078	Bagged
43138	Anodized Aluminum - Red	1-1/4" diameter	3/16"	1	1090	Bagged
43145	Anodized Aluminum - Red	1-1/2" diameter	3/16"	1	1098	Bagged
43013	Anodized Aluminum - Red	2" diameter	3/16"	1	1110	Bagged
43018	Anodized Aluminum - Red	3" diameter	3/16"	1	1124	Bagged
43006	Anodized Aluminum - Blue	1" diameter	3/16"	1	1078	Bagged
43139	Anodized Aluminum - Blue	1-1/4" diameter	3/16"	1	1090	Bagged
43146	Anodized Aluminum - Blue	1-1/2" diameter	3/16"	1	1098	Bagged
43011	Anodized Aluminum - Blue	2" diameter	3/16"	1	1110	Bagged
43016	Anodized Aluminum - Blue	3" diameter	3/16"	1	1124	Bagged
43005	Anodized Aluminum - Black	1" diameter	3/16"	1	1078	Bagged
43140	Anodized Aluminum - Black	1-1/4" diameter	3/16"	1	1090	Bagged
43147	Anodized Aluminum - Black	1-1/2" diameter	3/16"	1	1098	Bagged
43010	Anodized Aluminum - Black	2" diameter	3/16"	1	1110	Bagged
43015	Anodized Aluminum - Black	3" diameter	3/16"	1	1124	Bagged
43007	Anodized Aluminum - Gold	1" diameter	3/16"	1	1078	Bagged
43141	Anodized Aluminum - Gold	1-1/4" diameter	3/16"	1	1090	Bagged
43148	Anodized Aluminum - Gold	1-1/2" diameter	3/16"	1	1098	Bagged
43012	Anodized Aluminum - Gold	2" diameter	3/16"	1	1110	Bagged
43017	Anodized Aluminum - Gold	3" diameter	3/16"	1	1124	Bagged
43082	Anodized Aluminum - Green	1" diameter	3/16"	1	1078	Bagged
43143	Anodized Aluminum - Green	1-1/4" diameter	3/16"	1	1090	Bagged
43102	Anodized Aluminum - Green	1-1/2" diameter	3/16"	1	1098	Bagged

Tags

Blank Metal Tags

Round Tags

Model#	Description	Dimensions	Hole Size	holes	Die Reference	Pkg.
43084	Anodized Aluminum - Green	2" diameter	3/16"	1	1110	Bagged
43086	Anodized Aluminum - Green	3" diameter	3/16"	1	1124	Bagged
43009	Anodized Aluminum - Orange	1" diameter	3/16"	1	1078	Bagged
43142	Anodized Aluminum - Orange	1-1/4" diameter	3/16"	1	1090	Bagged
43001	Anodized Aluminum - Orange	1-1/2" diameter	3/16"	1	1098	Bagged
43014	Anodized Aluminum - Orange	2" diameter	3/16"	1	1110	Bagged
43019	Anodized Aluminum - Orange	3" diameter	3/16"	1	1124	Bagged
43081	Anodized Aluminum - Yellow	1" diameter	3/16"	1	1078	Bagged
43144	Anodized Aluminum - Yellow	1-1/4" diameter	3/16"	1	1090	Bagged
43077	Anodized Aluminum - Yellow	1-1/2" diameter	3/16"	1	1098	Bagged
43083	Anodized Aluminum - Yellow	2" diameter	3/16"	1	1110	Bagged
43085	Anodized Aluminum - Yellow	3" diameter	3/16"	1	1124	Bagged

Round Tags With Ears



Aluminum



Brass



Stainless Steel



- All Brass and Aluminum Tags are made from 18 Gauge Material
- All Stainless Steel Tags are made from 20 Gauge Material
- 316 Stainless Steel delivers maximum durability for extreme conditions

Model#	Description	Dimensions	Hole Size	holes	Die Reference	Pkg.
41376	Aluminum	1" diameter plus Ear	7/64"	1	722S	Bagged
41386	Aluminum	1-1/4" diameter plus Ear	11/64"	1	723A	Bagged
41377	Brass	1" diameter plus Ear	7/64"	1	722A	Bagged
41387	Brass	1-1/4" diameter plus Ear	11/64"	1	723A	Bagged
41378	Stainless Steel	1" diameter plus Ear	7/64"	1	722S	Bagged
41388	Stainless Steel	1-1/4" diameter plus Ear	11/64"	1	723S	Bagged
43127	316 Stainless Steel	1" dia. plus Ear	7/64"	1	722	Bagged
43128	316 Stainless Steel	1-1/4" dia. plus Ear	11/64"	1	723	Bagged

Blank Metal Tags

Oval Tags



Anodized



Aluminum



Brass



Stainless Steel



- All Brass and Aluminum Tags are made from 18 Gauge Material
- All Stainless Steel Tags are made from 20 Gauge Material
- 316 Stainless Steel delivers maximum durability for extreme conditions
- Anodized Aluminum Red, Blue, Black, Green, Orange, Yellow are 18 Gauge and Gold is 20 Gauge

Model#	Description	Dimensions	Hole Size	holes	Die Reference	Pkg.
41696	Aluminum	3/4" x 1-11/32"	3/32"	2	993A	Bagged
41741	Aluminum	1" x 1- 7/8"	1/8"	2	1009A	Bagged
41771	Aluminum	1-5/32" x 2-1/16"	1/8"	2	1019A	Bagged
41697	Brass	3/4" x 1-11/32"	3/32"	2	993B	Bagged
41742	Brass	1" x 1-7/8"	1/8"	2	1009B	Bagged
41772	Brass	1-5/32" x 2-1/16"	1/8"	2	1019B	Bagged
41698	Stainless Steel	3/4" x 1-11/32"	3/32"	2	993S	Bagged
41743	Stainless Steel	1" x 1-7/8"	1/8"	2	1009S	Bagged
41773	Stainless Steel	1-5/32" x 2-1/16"	1/8"	2	1019S	Bagged
43120	316 Stainless Steel	1"x1-7/8"	1/8"	2	1009	Bagged
43121	316 Stainless Steel	1-5x32"x2-1/16"	1/8"	2	1019	Bagged
43149	Anodized Aluminum - Red	1-5/32"x2-1/16"	1/8"	2	1019	Bagged
43150	Anodized Aluminum - Blue	1-5/32"x2-1/16"	1/8"	2	1019	Bagged
43151	Anodized Aluminum - Black	1-5/32"x2-1/16"	1/8"	2	1019	Bagged
43152	Anodized Aluminum - Gold	1-5/32"x2-1/16"	1/8"	2	1019	Bagged
43153	Anodized Aluminum - Orange	1-5/32"x2-1/16"	1/8"	2	1019	Bagged
43154	Anodized Aluminum - Green	1-5/32"x2-1/16"	1/8"	2	1019	Bagged
43155	Anodized Aluminum - Yellow	1-5/32"x2-1/16"	1/8"	2	1019	Bagged

Blank Metal Tags

Square Tags



Anodized



Aluminum



Brass



Stainless Steel



- All Brass and Aluminum Tags are made from 18 Gauge Material
- All Stainless Steel Tags are made from 20 Gauge Material
- 316 Stainless Steel delivers maximum durability for extreme conditions
- Anodized Aluminum Red, Blue, Black, Green, Orange, Yellow are 18 Gauge and Gold is 20 Gauge

Model#	Description	Dimensions	Hole Size	holes	Die Reference	Pkg.
41421	Aluminum	1"	3/16"	1	913A	Bagged
41431	Aluminum	1-1/4"	3/16"	1	916A	Bagged
41451	Aluminum	1-1/2"	3/16"	1	3590A	Bagged
41461	Aluminum	2"	3/16"	1	3581A	Bagged
41422	Brass	1"	3/16"	1	913B	Bagged
41432	Brass	1-1/4"	3/16"	1	916B	Bagged
41452	Brass	1-1/2"	3/16"	1	3590B	Bagged
41462	Brass	2"	3/16"	1	3581B	Bagged
41423	Stainless Steel	1"	3/16"	1	913S	Bagged
41433	Stainless Steel	1-1/4"	3/16"	1	916S	Bagged
41453	Stainless Steel	1-1/2"	3/16"	1	3590S	Bagged
41463	Stainless Steel	2"	3/16"	1	3581S	Bagged
43134	316 Stainless Steel	1"	3/16"	1	913	Bagged
43135	316 Stainless Steel	1-1/4"	3/16"	1	916	Bagged
43136	316 Stainless Steel	1-1/2"	3/16"	1	3590	Bagged
43137	316 Stainless Steel	2"	3/16"	1	3581	Bagged
43020	Anodized Aluminum - Black	1"	3/16"	1	913	Bagged
43025	Anodized Aluminum - Black	1-1/4"	3/16"	1	916	Bagged
43158	Anodized Aluminum - Black	1-1/2"	3/16"	1	3590	Bagged
43030	Anodized Aluminum - Black	2"	3/16"	1	3581	Bagged
43021	Anodized Aluminum - Blue	1"	3/16"	1	913	Bagged
43026	Anodized Aluminum - Blue	1-1/4"	3/16"	1	916	Bagged
43157	Anodized Aluminum - Blue	1-1/2"	3/16"	1	3590	Bagged
43031	Anodized Aluminum - Blue	2"	3/16"	1	3581	Bagged
43022	Anodized Aluminum - Gold	1"	3/16"	1	913	Bagged
43027	Anodized Aluminum - Gold	1-1/4"	3/16"	1	916	Bagged
43159	Anodized Aluminum - Gold	1-1/2"	3/16"	1	3590	Bagged
43032	Anodized Aluminum - Gold	2"	3/16"	1	3581	Bagged
43088	Anodized Aluminum - Green	1"	3/16"	1	913	Bagged
43090	Anodized Aluminum - Green	1-1/4"	3/16"	1	916	Bagged
43104	Anodized Aluminum - Green	1-1/2"	3/16"	1	3590	Bagged
43092	Anodized Aluminum - Green	2"	3/16"	1	3581	Bagged
43024	Anodized Aluminum - Orange	1"	3/16"	1	913	Bagged
43029	Anodized Aluminum - Orange	1-1/4"	3/16"	1	916	Bagged
43003	Anodized Aluminum - Orange	1-1/2"	3/16"	1	3590	Bagged
43034	Anodized Aluminum - Orange	2"	3/16"	1	3581	Bagged
43023	Anodized Aluminum - Red	1"	3/16"	1	913	Bagged
43028	Anodized Aluminum - Red	1-1/4"	3/16"	1	916	Bagged
43156	Anodized Aluminum - Red	1-1/2"	3/16"	1	3590	Bagged
43033	Anodized Aluminum - Red	2"	3/16"	1	3581	Bagged
43087	Anodized Aluminum - Yellow	1"	3/16"	1	913	Bagged
43089	Anodized Aluminum - Yellow	1-1/4"	3/16"	1	916	Bagged
43079	Anodized Aluminum - Yellow	1-1/2"	3/16"	1	3590	Bagged
43091	Anodized Aluminum - Yellow	2"	3/16"	1	3581	Bagged

Tags

Blank Metal Tags

Rectangle Tags With Notched Corners



Anodized



Aluminum



Brass



Stainless Steel



- All Brass and Aluminum Tags are made from 18 Gauge Material
- All Stainless Steel Tags are made from 20 Gauge Material
- 316 Stainless Steel delivers maximum durability for extreme conditions
- Anodized Aluminum Red, Blue, Black, Green, Orange, Yellow are 18 Gauge and Gold is 20 Gauge

Model#	Description	Dimensions	Hole Size	holes	Die Reference	Pkg.
41331	Aluminum	1-7/16" x 3-1/16"	5/32"	2	190A	Bagged
41332	Brass	1-7/16" x 3-1/16"	5/32"	2	190B	Bagged
41333	Stainless Steel	1-7/16" x 3-1/16"	5/32"	2	190S	Bagged
43119	316 Stainless Steel	1-7/16"x3-1/16"	5/32"	2	190	Bagged
43160	Anodized Aluminum - Red	1-7/16"x3-1/16"	5/32"	2	190	Bagged
43161	Anodized Aluminum - Blue	1-7/16"x3-1/16"	5/32"	2	190	Bagged
43162	Anodized Aluminum - Black	1-7/16"x3-1/16"	5/32"	2	190	Bagged
43163	Anodized Aluminum - Gold	1-7/16"x3-1/16"	5/32"	2	190	Bagged
43164	Anodized Aluminum - Orange	1-7/16"x3-1/16"	5/32"	2	190	Bagged
43165	Anodized Aluminum - Green	1-7/16"x3-1/16"	5/32"	2	190	Bagged
43166	Anodized Aluminum - Yellow	1-7/16"x3-1/16"	5/32"	2	190	Bagged

Tags

Rectangle Tags With Rounded Corners



Anodized



Aluminum



Brass



Stainless Steel



- All Brass and Aluminum Tags are made from 18 Gauge Material
- All Stainless Steel Tags are made from 20 Gauge Material
- 316 Stainless Steel delivers maximum durability for extreme conditions
- Anodized Aluminum Red, Blue, Black, Green, Orange, Yellow are 18 Gauge and Gold is 20 Gauge

Model#	Description	Dimensions	Hole Size	holes	Die Reference	Pkg.
41221	Aluminum	1/2" x 1-9/32"	1/8"	2	50A	Bagged
41241	Aluminum	5/8" x 2-1/2"	1/8"	2	140A	Bagged
41251	Aluminum	3/4" x 1-3/4"	1/8"	2	60A	Bagged
41271	Aluminum	1" x 2"	1/8"	2	76A	Bagged
41281	Aluminum	1" x 2-1/2"	1/8"	2	3575A	Bagged
41291	Aluminum	1" x 3"	1/8"	2	432A	Bagged
41316	Aluminum	1-1/2" x 3"	1/8"	2	96A	Bagged
41222	Brass	1/2" x 1-9/32"	1/8"	2	50B	Bagged
41242	Brass	5/8" x 2-1/2"	1/8"	2	140B	Bagged
41252	Brass	3/4" x 1-3/4"	1/8"	2	60B	Bagged
41272	Brass	1" x 2"	1/8"	2	76B	Bagged
41282	Brass	1" x 2-1/2"	1/8"	2	3575B	Bagged
41292	Brass	1" x 3"	1/8"	2	432B	Bagged
432B-16GA	Brass	1" x 3"	3/16"	2	432B-16GA	Bagged
41317	Brass	1-1/2" x 3"	1/8"	2	96B	Bagged
41223	Stainless Steel	1/2" x 1-9/32"	1/8"	2	50S	Bagged
41243	Stainless Steel	5/8" x 2-1/2"	1/8"	2	140S	Bagged
41253	Stainless Steel	3/4" x 1-3/4"	1/8"	2	60S	Bagged
41273	Stainless Steel	1" x 2"	1/8"	2	76S	Bagged
41283	Stainless Steel	1" x 2-1/2"	1/8"	2	3575S	Bagged
41293	Stainless Steel	1" x 3"	1/8"	2	432S	Bagged
41318	Stainless Steel	1-1/2" x 3"	1/8"	2	96S	Bagged
43110	316 Stainless Steel	1/2"x1-9/32"	1/8"	2	50	Bagged
43111	316 Stainless Steel	5/8"x2-1/2"	1/8"	2	140	Bagged
43112	316 Stainless Steel	3/4"x1-3/4"	1/8"	2	60	Bagged
43113	316 Stainless Steel	1"x2"	1/8"	2	76	Bagged
43114	316 Stainless Steel	1"x2-1/2"	1/8"	2	3575	Bagged
43115	316 Stainless Steel	1"x3"	1/8"	2	432	Bagged
43116	316 Stainless Steel	1-1/2"x3"	1/8"	2	96	Bagged
43050	Anodized Aluminum - Black	3/4"x1-3/4"	1/8"	2	60	Bagged
43035	Anodized Aluminum - Black	1"x2"	1/8"	2	76	Bagged
43169	Anodized Aluminum - Black	1"x3"	1/8"	2	432	Bagged
43040	Anodized Aluminum - Black	1.5"x3"	1/8"	2	96	Bagged
43045	Anodized Aluminum - Black	2"x4"	1/8"	2	434	Bagged
43051	Anodized Aluminum - Blue	3/4"x1-3/4"	1/8"	2	60	Bagged
43036	Anodized Aluminum - Blue	1"x2"	1/8"	2	76	Bagged
43168	Anodized Aluminum - Blue	1"x3"	1/8"	2	432	Bagged
43041	Anodized Aluminum - Blue	1.5"x3"	1/8"	2	96	Bagged
43046	Anodized Aluminum - Blue	2"x4"	1/8"	2	434	Bagged
43052	Anodized Aluminum - Gold	3/4"x1-3/4"	1/8"	2	60	Bagged
43037	Anodized Aluminum - Gold	1"x2"	1/8"	2	76	Bagged
43170	Anodized Aluminum - Gold	1"x3"	1/8"	2	432	Bagged
43042	Anodized Aluminum - Gold	1.5"x3"	1/8"	2	96	Bagged
43047	Anodized Aluminum - Gold	2"x4"	1/8"	2	434	Bagged
43101	Anodized Aluminum - Green	3/4"x1-3/4"	1/8"	2	60	Bagged
43094	Anodized Aluminum - Green	1"x2"	1/8"	2	76	Bagged
43105	Anodized Aluminum - Green	1"x3"	1/8"	2	432	Bagged
43096	Anodized Aluminum - Green	1.5"x3"	1/8"	2	96	Bagged
43099	Anodized Aluminum - Green	2"x4"	1/8"	2	434	Bagged
43054	Anodized Aluminum - Orange	3/4"x1-3/4"	1/8"	2	60	Bagged

Blank Metal Tags

Rectangle Tags With Rounded Corners

Model#	Description	Dimensions	Hole Size	holes	Die Reference	Pkg.
43039	Anodized Aluminum - Orange	1"x2"	1/8"	2	76	Bagged
43004	Anodized Aluminum - Orange	1"x3"	1/8"	2	432	Bagged
43044	Anodized Aluminum - Orange	1.5"x3"	1/8"	2	96	Bagged
43049	Anodized Aluminum - Orange	2"x4"	1/8"	2	434	Bagged
43053	Anodized Aluminum - Red	3/4"x1-3/4"	1/8"	2	60	Bagged
43038	Anodized Aluminum - Red	1"x2"	1/8"	2	76	Bagged
43167	Anodized Aluminum - Red	1"x3"	1/8"	2	432	Bagged
43043	Anodized Aluminum - Red	1.5"x3"	1/8"	2	96	Bagged
43048	Anodized Aluminum - Red	2"x4"	1/8"	2	434	Bagged
43100	Anodized Aluminum - Yellow	3/4"x1-3/4"	1/8"	2	60	Bagged
43093	Anodized Aluminum - Yellow	1"x2"	1/8"	2	76	Bagged
43080	Anodized Aluminum - Yellow	1"x3"	1/8"	2	432	Bagged
43095	Anodized Aluminum - Yellow	1.5"x3"	1/8"	2	96	Bagged
43098	Anodized Aluminum - Yellow	2"x4"	1/8"	2	434	Bagged

Tags

Blank Metal Tags

Rectangle Tags With Rounded Ends



Anodized



Aluminum



Brass



Stainless Steel



- All Brass and Aluminum Tags are made from 18 Gauge Material
- All Stainless Steel Tags are made from 20 Gauge Material
- 316 Stainless Steel delivers maximum durability for extreme conditions
- Anodized Aluminum Red, Blue, Black, Green, Orange, Yellow are 18 Gauge and Gold is 20 Gauge

Model#	Description	Dimensions	Hole Size	holes	Die Reference	Pkg.
41136	Aluminum	5/8" x 1-29/32"	1/8"	2	21A	Bagged
41151	Aluminum	5/8" x 2-13/16" - 18 Gauge	5/32"	2	24A	Bagged
41176	Aluminum	3/4" x 3-1/8" - 20 Gauge	5/32"	2	30A	Bagged
41186	Aluminum	49/64" x 1-13/16"	1/8"	2	32A	Bagged
41196	Aluminum	1" x 2-1/8"	1/8"	2	3585A	Bagged
41137	Brass	5/8" x 1-29/32"	1/8"	2	21B	Bagged
41152	Brass	5/8" x 2-13/16" - 20 Gauge	3/16"	2	24-316B	Bagged
41154	Brass	5/8" x 2-13/16" - 18 Gauge	5/32"	2	24-18B	Bagged
41177	Brass	3/4" x 3-1/8" - 20 Gauge	5/32"	2	30B	Bagged
41187	Brass	49/64" x 1-13/16"	1/8"	2	32B	Bagged
41197	Brass	1" x 2-1/8"	1/8"	2	3585B	Bagged
41138	Stainless Steel	5/8" x 1-29/32"	1/8"	2	21S	Bagged
41153	Stainless Steel	5/8" x 2-13/16" - 20 Gauge	5/32"	2	24S	Bagged
41178	Stainless Steel	3/4" x 3-1/8" - 20 Gauge	5/32"	2	30S	Bagged
41188	Stainless Steel	49/64" x 1-13/16"	1/8"	2	32S	Bagged
41198	Stainless Steel	1" x 2-1/8"	1/8"	2	3585S	Bagged
43106	316 Stainless Steel	5/8"x1-29/32"	1/8"	2	21	Bagged
43107	316 Stainless Steel	5/8"x2-13/16"	5/32"	2	24	Bagged
43108	316 Stainless Steel	3/4"x3-1/8"	5/32"	2	30	Bagged
43109	316 Stainless Steel	1"x2-1/8"	1/8"	2	3585	Bagged
43173	Anodized Aluminum - Black	5/8"x1-29/32"	1/8"	2	21	Bagged
43180	Anodized Aluminum - Black	1"x2-1/8"	1/8"	2	3585	Bagged
43172	Anodized Aluminum - Blue	5/8"x1-29/32"	1/8"	2	21	Bagged
43179	Anodized Aluminum - Blue	1"x2-1/8"	1/8"	2	3585	Bagged
43174	Anodized Aluminum - Gold	5/8"x1-29/32"	1/8"	2	21	Bagged
43181	Anodized Aluminum - Gold	1"x2-1/8"	1/8"	2	3585	Bagged
43176	Anodized Aluminum - Green	5/8"x1-29/32"	1/8"	2	21	Bagged
43183	Anodized Aluminum - Green	1"x2-1/8"	1/8"	2	3585	Bagged
43175	Anodized Aluminum - Orange	5/8"x1-29/32"	1/8"	2	21	Bagged
43182	Anodized Aluminum - Orange	1"x2-1/8"	1/8"	2	3585	Bagged
43171	Anodized Aluminum - Red	5/8"x1-29/32"	1/8"	2	21	Bagged
43178	Anodized Aluminum - Red	1"x2-1/8"	1/8"	2	3585	Bagged
43177	Anodized Aluminum - Yellow	5/8"x1-29/32"	1/8"	2	21	Bagged
43184	Anodized Aluminum - Yellow	1"x2-1/8"	1/8"	2	3585	Bagged

Tags

Numbered Checks



- Easy to read black filled numbers
- Available only in unbroken series of 25: 1-25, 26-50, up to 200
- All tags are 18 Gauge and have a 3/16" hole
- All sets are wired together in groups of 25
- Quick identification
- Reduce maintenance costs
- Promote safety

Model#	Description	Pkg.
40001	1" Brass - 1 to 100	Bagged
40002	1" Brass - 1 to 200	Bagged
40003	1" Brass - 1 to 25	Bagged
40004	1" Brass - 26 to 50	Bagged
40005	1" Brass - 51 to 75	Bagged
40006	1" Brass - 76 to 100	Bagged
40007	1" Brass - 101 to 125	Bagged
40008	1" Brass - 126 to 150	Bagged
40009	1" Brass - 151 to 175	Bagged
40010	1" Brass - 176 to 200	Bagged
40011	1- 1/4" Brass - 1 to 100	Bagged
40012	1- 1/4" Brass - 1 to 200	Bagged
40013	1- 1/4" Brass - 1 to 25	Bagged
40014	1- 1/4" Brass - 26 to 50	Bagged
40015	1- 1/4" Brass - 51 to 75	Bagged
40016	1- 1/4" Brass - 76 to 100	Bagged
40017	1- 1/4" Brass - 100 to 125	Bagged
40018	1- 1/4" Brass - 126 to 150	Bagged
40019	1- 1/4" Brass - 150 to 175	Bagged
40020	1- 1/4" Brass - 175 to 200	Bagged
40021	1- 1/2 Brass -001 to 100	Bagged
40022	1- 1/2 Brass -001 to 200	Bagged
40023	1- 1/2 Brass -001 to 025	Bagged
40024	1- 1/2 Brass -026 to 050	Bagged
40025	1- 1/2 Brass -051 to 075	Bagged
40026	1- 1/2 Brass -076 to 100	Bagged
40027	1- 1/2 Brass -101 to 125	Bagged
40028	1- 1/2 Brass -126 to 150	Bagged
40029	1- 1/2 Brass -151 to 175	Bagged
40030	1- 1/2 Brass -176 to 200	Bagged
40031	1- 1/4" Aluminum - 1 to 100	Bagged
40032	1- 1/4" Aluminum - 1 to 200	Bagged
40033	1- 1/4" Aluminum - 1 to 25	Bagged
40034	1- 1/4" Aluminum - 26 to 50	Bagged
40035	1- 1/4" Aluminum - 51 to 75	Bagged
40036	1- 1/4" Aluminum - 76 to 100	Bagged
40037	1- 1/4" Aluminum - 101 to 125	Bagged
40038	1- 1/4" Aluminum - 126 to 150	Bagged
40039	1- 1/4" Aluminum - 151 to 175	Bagged
40040	1- 1/4" Aluminum - 176 to 200	Bagged

Numbered Valve Tags



- Easy to read brass tags with black filled letters and numbers
- Lettered in 6 titles and numbered consecutively in unbroken sets of 25: 1-25, 26-50, 51-75, 76-100, etc. up to 200
- Quick identification
- Reduce maintenance costs
- Promote safety

Model#	Description	Pkg.
40105A	HTG - Brass - 001 to 025	Bagged
40105B	HTG - Brass - 026 to 050	Bagged
40105C	HTG - Brass - 051 to 075	Bagged
40105D	HTG - Brass - 076 to 100	Bagged
40105E	HTG - Brass - 101 to 125	Bagged
40105F	HTG - Brass - 126 to 150	Bagged
40105G	HTG - Brass - 151 to 175	Bagged
40105H	HTG - Brass - 176 to 200	Bagged
40115A	PLBG - Brass - 001 to 025	Bagged
40115B	PLBG - Brass - 026 to 050	Bagged
40115C	PLBG - Brass - 051 to 075	Bagged
40115D	PLBG - Brass - 076 to 100	Bagged
40115E	PLBG - Brass - 101 to 125	Bagged
40115F	PLBG - Brass - 126 to 150	Bagged
40115G	PLBG - Brass - 151 to 175	Bagged
40115H	PLBG - Brass - 176 to 200	Bagged
40125A	CW - Brass - 001 to 025	Bagged
40125B	CW - Brass - 026 to 050	Bagged
40125C	CW - Brass - 051 to 075	Bagged
40125D	CW - Brass - 076 to 100	Bagged
40125E	CW - Brass - 101 to 125	Bagged
40125F	CW - Brass - 126 to 150	Bagged
40125G	CW - Brass - 151 to 175	Bagged
40125H	CW - Brass - 176 to 200	Bagged
40135A	HW - Brass - 001 to 025	Bagged
40135B	HW - Brass - 026 to 050	Bagged
40135C	HW - Brass - 051 to 075	Bagged
40135D	HW - Brass - 076 to 100	Bagged
40135E	HW - Brass - 101 to 125	Bagged
40135F	HW - Brass - 126 to 150	Bagged
40135G	HW - Brass - 151 to 175	Bagged
40135H	HW - Brass - 176 to 200	Bagged
40145A	CHWR - Brass - 001 to 025	Bagged
40145B	CHWR - Brass - 026 to 050	Bagged
40145C	CHWR - Brass - 051 to 075	Bagged
40145D	CHWR - Brass - 076 to 100	Bagged
40145E	CHWR - Brass - 101 to 125	Bagged
40145F	CHWR - Brass - 126 to 150	Bagged
40145G	CHWR - Brass - 151 to 175	Bagged
40145H	CHWR - Brass - 176 to 200	Bagged
40155A	GAS - Brass - 001 to 025	Bagged
40155B	GAS - Brass - 026 to 050	Bagged
40155C	GAS - Brass - 051 to 075	Bagged
40155D	GAS - Brass - 076 to 100	Bagged
40155E	GAS - Brass - 101 to 125	Bagged
40155F	GAS - Brass - 126 to 150	Bagged
40155G	GAS - Brass 151 to 175	Bagged
40155H	GAS - Brass - 176 to 200	Bagged

Spring Sleeve Check Ring



- Easy access to add or remove rings
- Chrome plated
- Does not come with tags
- Priced per hundred

Model#	Description	Pkg.
40087	Spring Sleeve Check Ring	Bagged

Beaded Chain



- For quick, permanent fastening of checks and tags
- Easily closed by hand
- Flexible for hard to fasten places
- Priced per hundred

Model#	Description	Pkg.
40096	4.5" Nickel pltd beaded chain	Bagged
40097	4.5" Brass pltd beaded chain	Bagged
40098	6" Brass pltd beaded chain	Bagged

Brass/Nickel Plated S-Hook Links



- For quick, permanent fastening of checks and tags
- Easily closed with pliers
- Priced per hundred

Model#	Description	Pkg.
41000	Brass # 5 - 7/8" long	Bagged
41001	Brass # 3 - 1-1/8" long	Bagged
41002	Brass #2 - 1-1/2" long	Bagged
41003	Nickel # 5 - 7/8" long	Bagged
41004	Nickel # 3 - 1-1/8" long	Bagged
41005	Nickel # 2 - 1-1/2" long	Bagged

Split Key Rings



- Made of spring tempered steel
- Perfect for hanging any tag
- Priced per hundred

Model#	Description	Pkg.
40080	5/8" I.D. Split Key Rings	Bagged
40081	3/4" I.D. Split Key Rings	Bagged
40082	1" I.D. Split Key Rings	Bagged
40083	1.25" I.D. Split Key Rings	Bagged
40084	1.5" I.D. Split Key Rings	Bagged
40085	2" I.D. Split Key Rings	Bagged

Aluminum Write On Tags



- Can be easily marked with pen, pencil, or other writing device
- Priced per hundred

Model#	Description	Pkg.
X1291A	1 3/8" x 3 1/8" Aluminum write on tag	Bagged
97443	3" x 5" Aluminum write on tag	Bagged

Blank Cable Tags



- Made from 28 Gauge soft aluminum
- Easily folds and re-folds many times
- Perfect for holding and organizing cables
- Priced per hundred

Model#	Description	Die Reference	Pkg.
41901	Length 1-15/16"	585A	Bagged
41911	Length 2"	588A	Bagged
41914	Length 3-15/16"	589A	Bagged
41917	Length 6-1/2"	590A	Bagged
41920	Length 11"	591B	Bagged
41924	Length 10"	592B	Bagged
41930	Length 11"	593B	Bagged
41939	Length 1-11/16"	3467A	Bagged
41942	Length 3-3/8"	3470A	Bagged
41945	Length 5-3/4"	3508A	Bagged
41951	Length 3-1/2"	3527A	Bagged
41956	Length 6-3/4"	3555A	Bagged

Premier Automatic Seals



- Self-locking, permanent mechanical closure
- 8-3/4" x 5/16" metal strap can be embossed with name and consecutive numbering
- Available in lots of 1,000
- Lettering has a maximum capacity of 20 spaces
- Priced per thousand
- For custom call customer service

Model#	Description	Pkg.
2799PN	Premier Automatic Seals	Bagged

Mechanical Seals



- Precision built to stay locked
- Embossed identity and consecutive numbering
- 8-1/2" x 5/8" with plain or colored heads
- Available in lots of 1,000
- Lettering has a maximum capacity of 20 spaces
- Priced per thousand
- For custom call customer service

Model#	Description	Pkg.
2799GN	Globe Mechanical Seals	Bagged

Security



- Slip twisted wire through the hole in Hanson lead seal discs and crush with a hand press
- Cannot be opened or tampered with without detection
- Lead seals are available separately or with wires attached
- Wires are annealed (copper coated) steel unless indicated
- Priced per hundred, except for the wire spools

Model#	Description	Pkg.
27911	7/16" dia. lead seals with 10" two ply wires	Bagged
27913	1/2" dia. leads only	Bagged
27915	10" two-ply annealed wire	Bagged
27916	1000 ft. spool of 27915	Bagged
27917	12" galvanized tag wires	Bagged
27918	12" stainless steel tag wires	Bagged

Sealing Press



- Available with blank dies or marking dies (7/16" diameter) for one or both sides of the lead disc
- Provide copy (max. 4 characters) if desired, and state whether one or both dies are to be lettered
- Strong, small (2-1/2" x 5" closed) press tightly closes seals

Model#	Description	Pkg.
27905	Sealing Press with two blank dies	Bagged
27905A	Sealing Press with one die engraved	Bagged
27905B	Sealing Press with both dies engraved	Bagged
27906	Extra blank dies	Bagged
27906B	Extra engraved dies	Bagged



**C.H.
HANSON**
Since 1866 • Tools for Generations™

CUSTOM PRODUCTS

We specialize in custom products.
CH Hanson has proudly been making custom products since 1866.
Contact us for custom Stamps, Stencils, Tags, and Tape.

Stamps

- Any message, symbol or font



Tags

- Choose Shape, Size, Material, and Message



Stencils

- Any font, characters, symbol, or logo
- From ½ inch to 12 foot



Tape

- Any message, symbol or font
- Multiple thickness available



Contact us for all your custom needs

C.H. Hanson • www.chhanson.com • Phone 800-827-3398 • Fax 800-827-5834



TERMS & CONDITIONS

MINIMUM ORDER: \$25.00 NET

MUST ORDER IN CASE PACK, UNLESS NOTED OTHERWISE

TERMS: NET 30 DAYS

FREIGHT: FOB NAPERVILLE, IL

New Lower Freight Prepaid Terms

Freight is prepaid on orders with a value of \$350 or more shipping to one location within the continental United States. To qualify for this new lower prepaid freight terms, the order must not include; Barricade Tape, Tape Accessories, Flagging Tape or Stake Flags (pages 22-27).

Orders that contain Barricade Tape, Tape Accessories, Flagging Tape, or Stake Flags (items found on pages 22-27 of the 2013 catalog) will continue to have a prepaid status shipping to one location within the continental United States with a value of \$750 or more.

Any order going to Hawaii, Canada or Alaska will continue to have a prepaid status on orders with a value of \$1500 or more.

We reserve the right to select the most economical means of transportation for freight allowed orders.

NOTE: All items are available from our Midwest Warehouse, in Naperville, IL. Custom made items will be made and shipped from Naperville, IL.

Because of fluctuating material costs, all orders will be priced on the day of shipment. All published prices will be adhered to if possible-but are subject to change without notice.

Unable to locate an item? Call us or e-mail us for a quote.
1 (800) 827-3398 or sales@chhanson.com

**PRODUCT RETURN POLICY
(SEE DETAILED POLICY BELOW)**

Return Requests must be approved by C.H. Hanson with an RGA number and sent prepaid. These returns will be subject to an inspection (for original condition) and a 15% restocking fee. All shortages must be reported within 30 days. No returns will be accepted after 45 days. Custom made items cannot be returned.

DISCLAIMER OF IMPLIED WARRANTIES AND LIMITATIONS ON CONSEQUENTIAL DAMAGES THERE IS NO IMPLIED WARRANTY OF MERCHANTABILITY OR FITNESS WITH RESPECT TO THIS PRODUCT. NOR ARE THERE ANY OTHER WARRANTY TIES WHICH EXTEND BEYOND PROVISIONS OF THAT ATTACHED PRODUCT RETURN POLICY.

In any event no implied warranty of merchantability or fitness shall be of a duration greater than the duration referred to in the foregoing Product Return Policy.

C.H. Hanson Shall have no liability whatsoever for CONSEQUENTIAL DAMAGES



2000 N. Aurora Road
Naperville, IL 60563
Phone: (800) 827-3398
Fax: (800) 827-5834

E-Mail: sales@chhanson.com
www.chhanson.com